

零部件目录

SSL100 (D1105) 滑移装载机

产品编码: 303090001
Product

Multifunction Skid Steer Loader Parts List

SSL100 (D1105) Skid Steer Loader



第一章 多功能装载机总成	Chapter 1 Mutlifunction skid steer loader Assembly.....	1-1
A 多功能装载机总成	Mutlifunction skid steer loader Assembly.....	1-3
第二章 传动系统	Chapter 2 Transmission System.....	2-1
B 行走履带系统	Travelling track systems.....	2-2
B1 左履带架安装组件 (200宽履带)	Left track carrier mounting kit (200 wide track).....	2-4
B2 左履带架安装组件 (200宽履带)	Left track carrier mounting kit (200 wide track).....	2-6
第三章 动力系统	Chapter 3 Power System.....	3-1
C 动力系统安装总成	Power system installation assembly.....	3-2
C1 动力系统组件	Power system components.....	3-4
C2 进气系统	Air intake system.....	3-6
C3 散热系统	Cooling System.....	3-8
C4 排气系统	Exhaust system.....	3-10
C5 燃油系统	Fuel system.....	3-12
第四章 车体系统	Chapter 4 Vehicle System.....	4-1
D 车体系统总成	Vehicle system.....	4-2
D1 大臂总成	Arm assembly.....	4-6
D2 尾罩总成	Tail Cover Assembly.....	4-8
D3 防护装配组件	Protective mounting components.....	4-10



SHANGQI

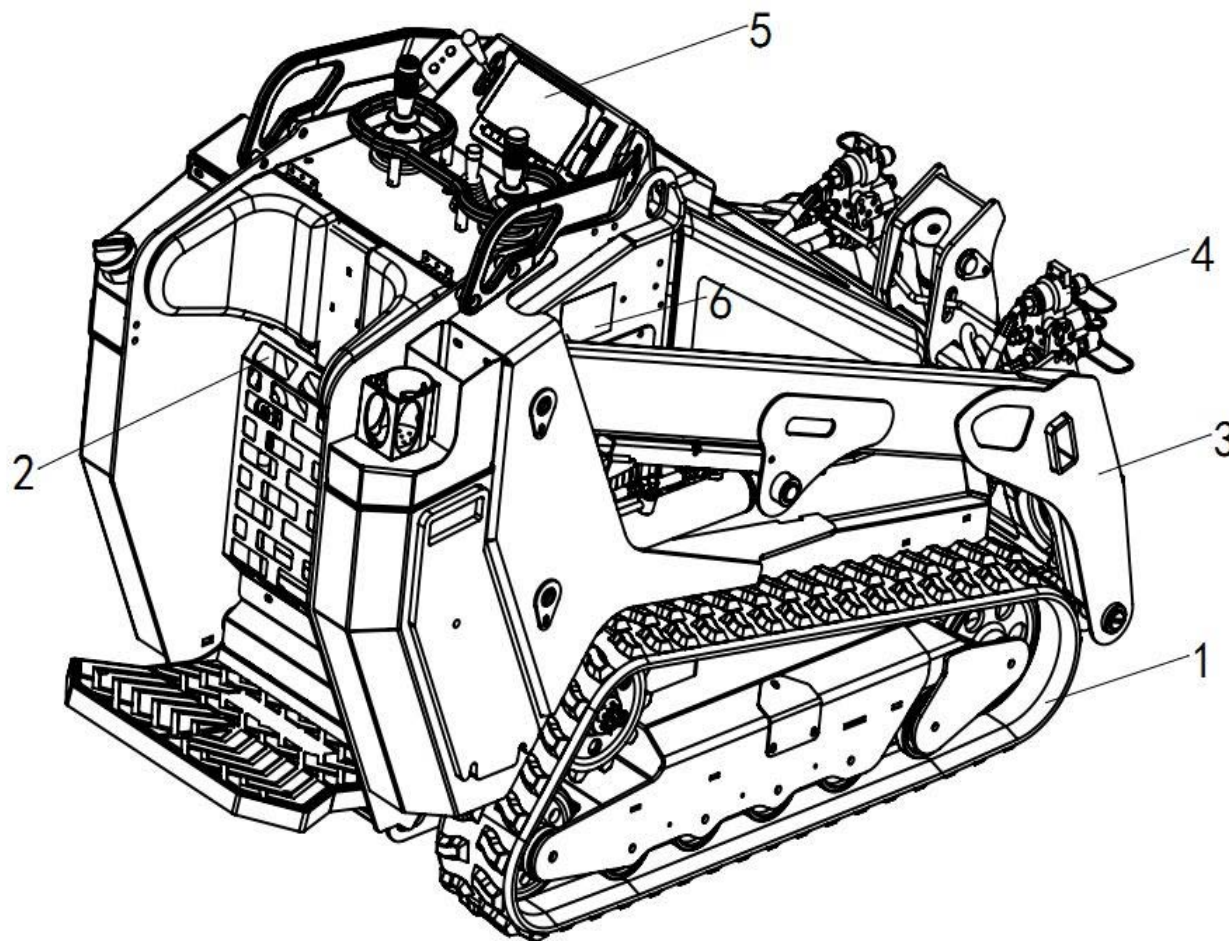
Catalog目录

SSL100多功能装载机零部件图册SSL100 Multi-function skid steer loader parts list

第五章 液压系	Chapter 5 Hydraulic system	5-1
E 液压系统	Hydraulic system	5-2
第六章 电气系	Chapter 6 Electric System	6-1
F 电气系统安装总成	Electric system installation assembly	6-2

第一章 整车系统

Chapter 1 SSL100 Mutlifunction skid steer loader Assembly



第二章 行走履带系统

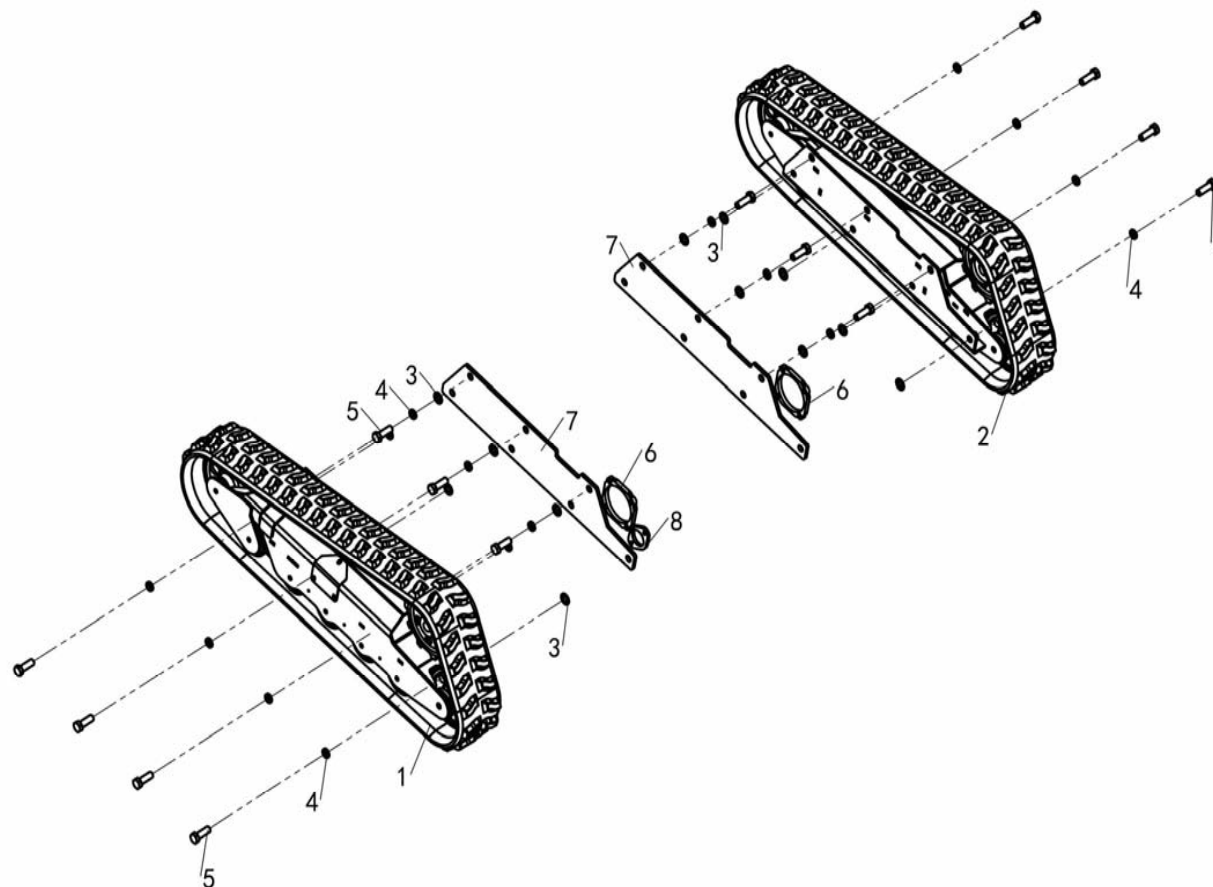
Chapter 2 Travelling track systems



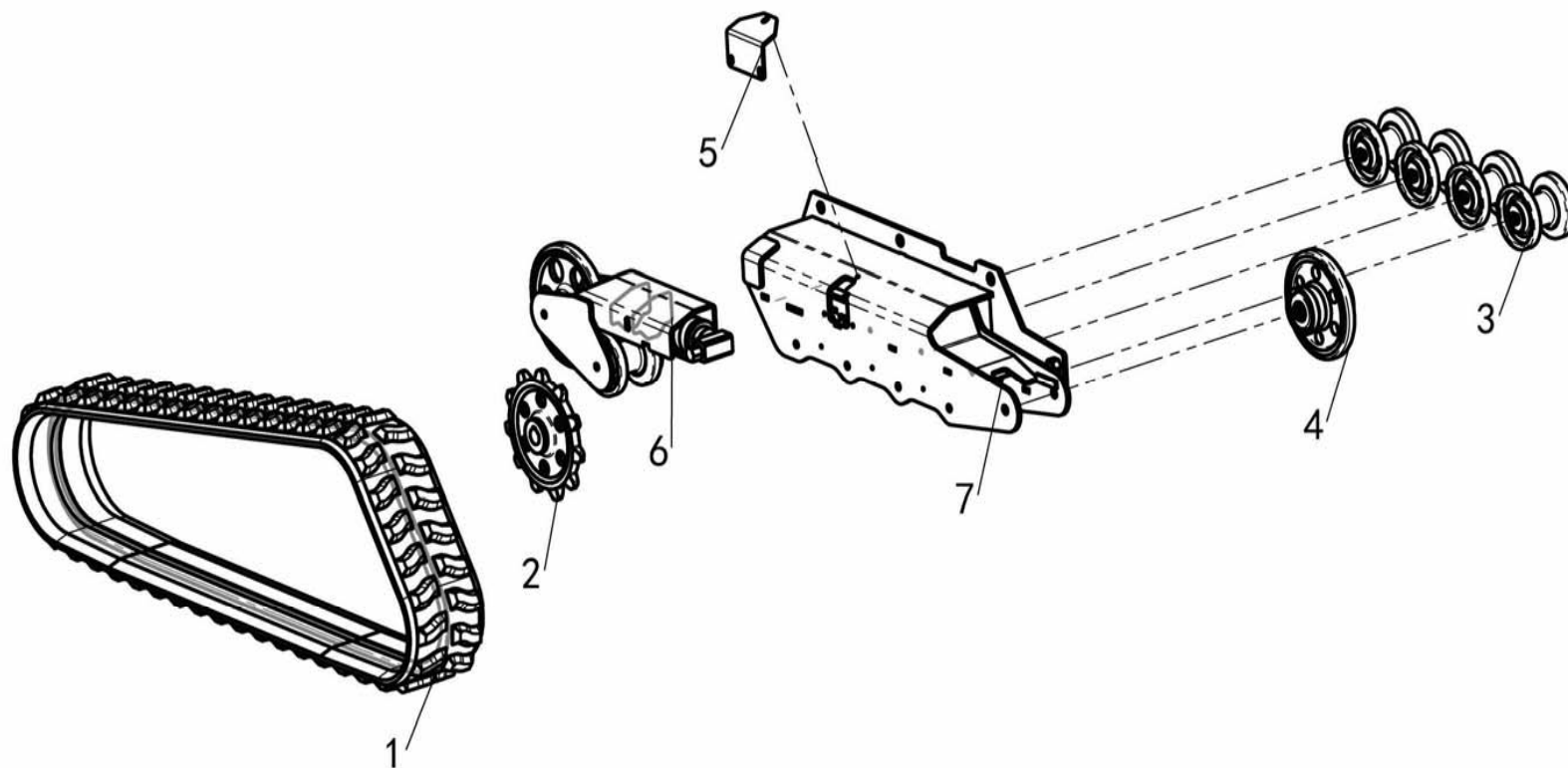
SHANGQI

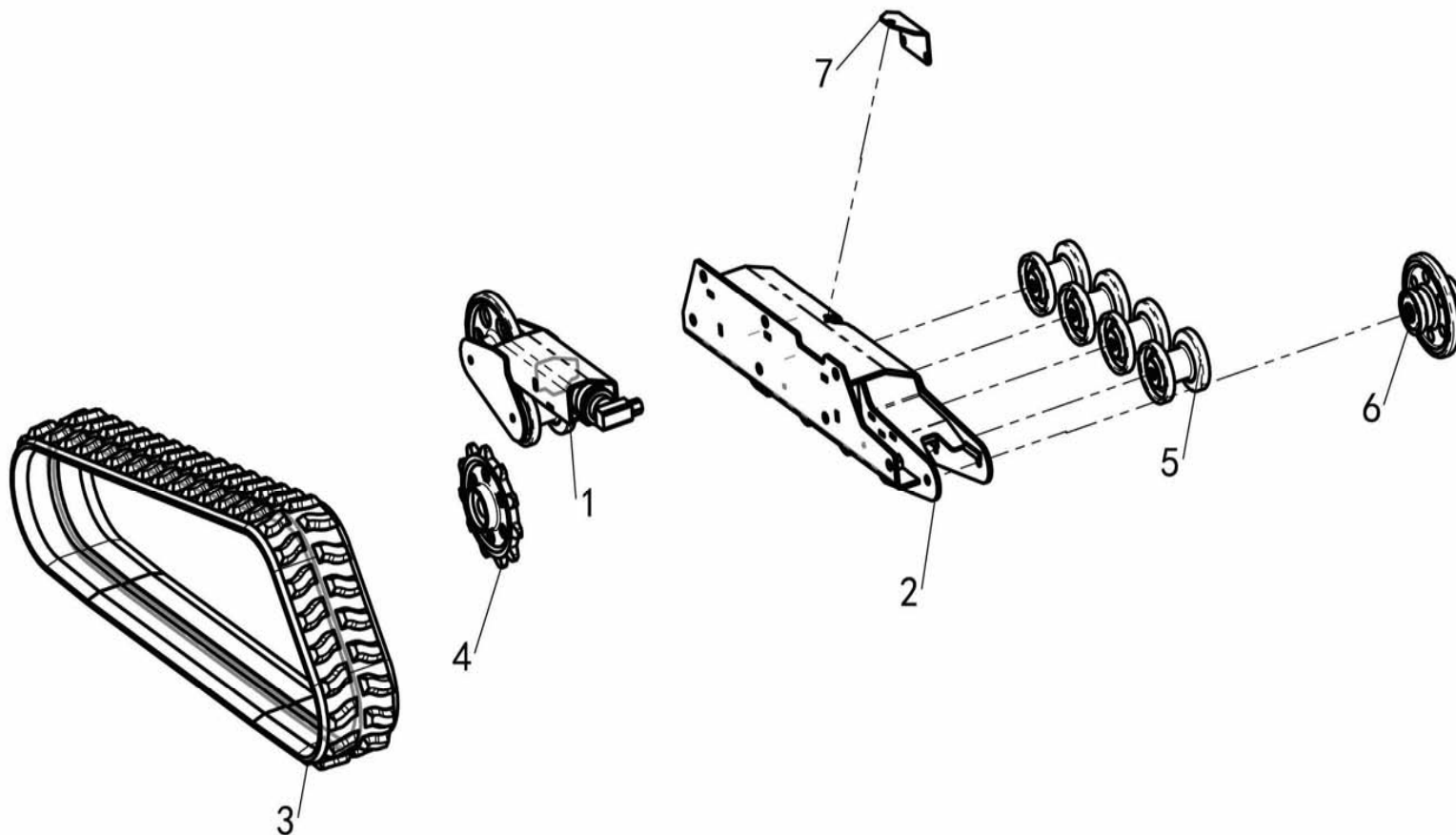
行走履带系统 Travelling track systems

SSL100多功能装载机零部件图册
SSL100 Multi-function skid steer loader parts list



序号No	代码Part No	名称Item	数量Qty	备注Remark
1	SSL100-110000-010) Left track carrier mounting kit (200 wide track)Left track carrier	1	
2	SSL100-120000-010	Right track carrier mounting kit (200 wide track)Right track carrier	1	
3	000971 000201A	平垫圈20 Flat washers 20	14	
4	000093 000201A	标准型弹性垫圈20 Standard elastic washers 20	14	
5	005783 200602A	螺栓全螺纹M20×60-10.9 Hexagon head bolts full thread M20×60	14	
6	SSL100-600003-010	马达垫板 Motor pads	2	
7	SSL100-100001-010	履带架垫板 (10mm) Crawler frame pad (10mm)	2	
8	SSL100-100002-010	驻车制动垫块(10mm) Parking brake pad (10mm)	1	







SHANGQI

右履带架安装组件(200宽履带) Right track carrier mounting kit (200 wide track)

SSL100多功能装载机零部件图册

SSL100 Multi-function skid steer loader parts list

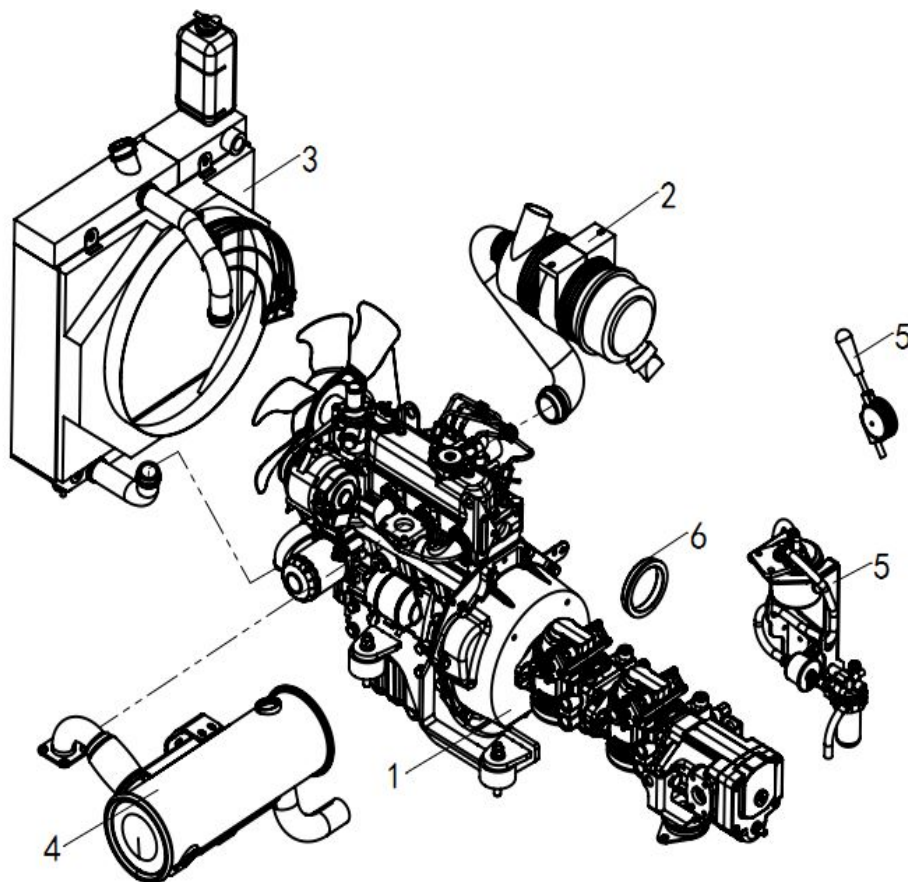
序号No	代码Part No	名称Item	数量Qty	备注Remark
1	SSL100-120100-000	右涨紧轮系组件Right tensioning wheel System Assembly	1	
2	SSL100-120200-000	右轮架组件Right wheel carrier assembly	1	
3	SSL100-110300-010	履带200X72X44 Track200X72X44	1	
4	SSL100-110001-000	驱动轮11齿 Drive wheel 11 teeth	1	
5	SSL100-110140-000	支重轮组件Support Wheel Assembly	4	
6	SSL100-110400-000	后引导轮Rear guide wheel	1	
7	SSL100-110002-000	履带涨紧加油口封板 Track tensioning filler seal plate	1	

B2	右履带架安装组件(200宽履带) Right track carrier mounting kit (200 wide track)			2-7
----	--	--	--	-----



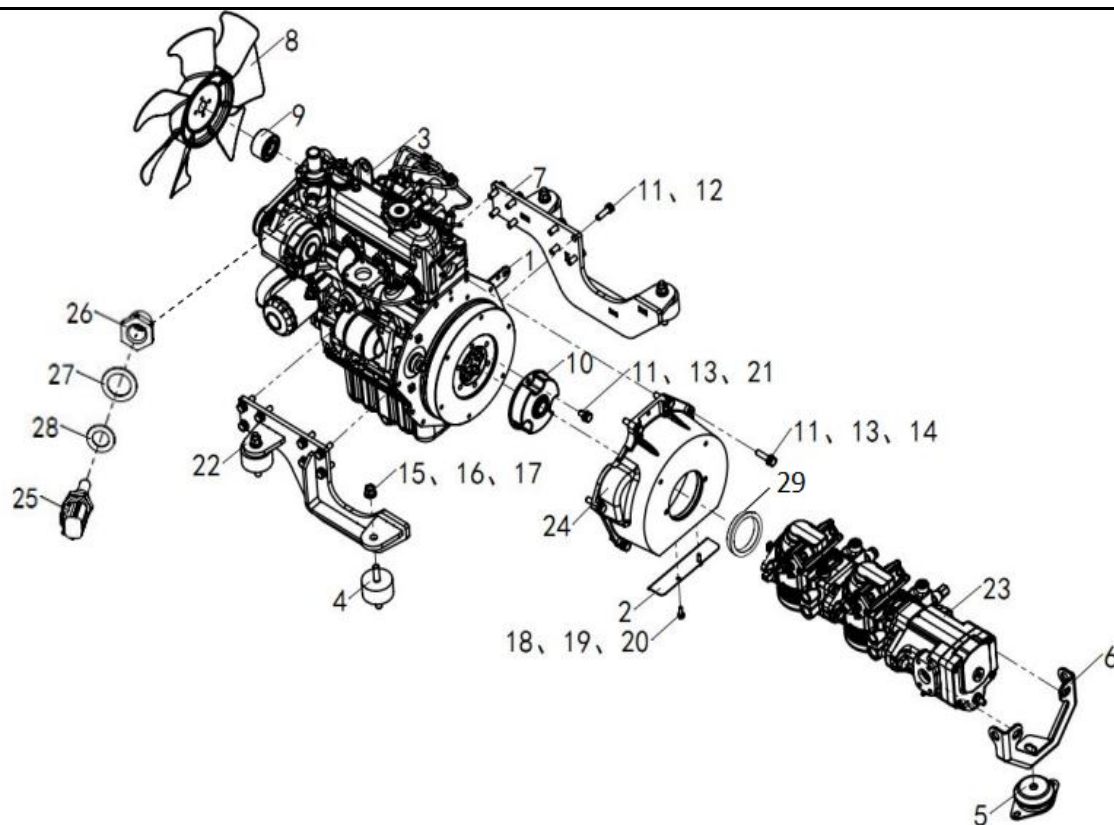
第三章 动力系统

Chapter 3 Power System



C 动力系安装总成 Power system mounting assembly





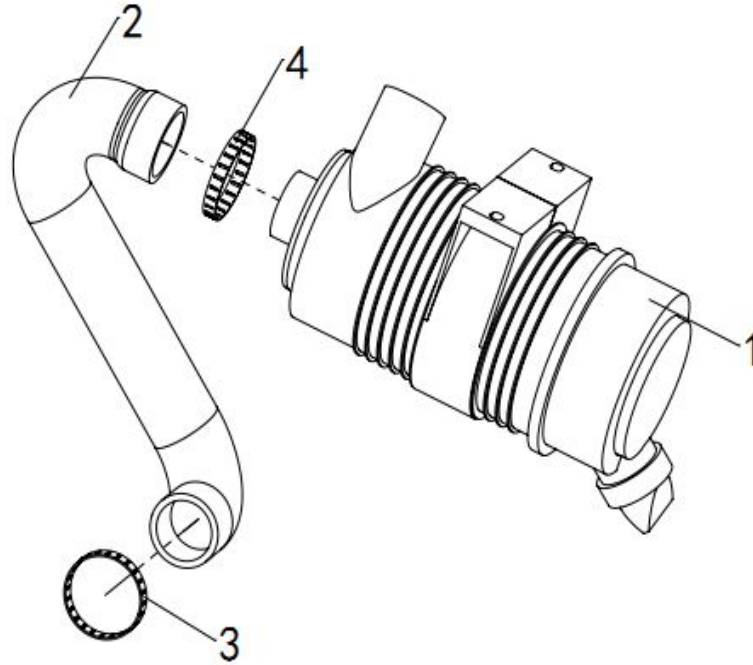


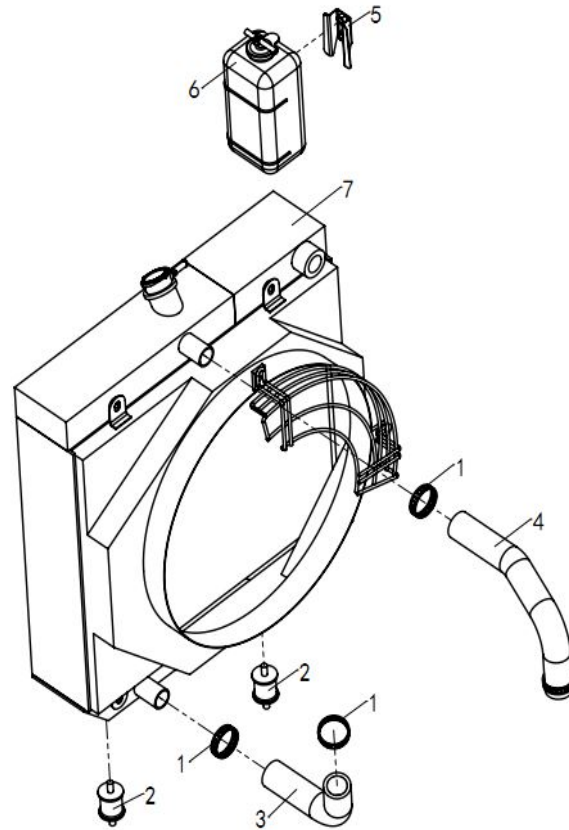
SHANGQI

动力系统组件

SSL100多功能装载机零部件图册
SSL100 skid steer loader parts list

序号No	代码Part No	名称Item	数量Qty	备注Remark
1	1130-360001-000	油门拉索支架 Throttle cable bracket	1	
2	1020-310003-000	离合器盖板 Clutch cover plate	1	
3	SSL100-310100-000	发动机D1105改制 (滑移) Engine D1105 converted (skid steer)	1	
4	1130-310600-G51	减震垫 shock-absorbing cushion	4	
5	K30G00 300100	3t发动机减震垫 3T Engine shock-absorbing cushion	1	
6	SSL100-310002-000	前部发动机脚安装座 Front Engine Foot Mount	1	
7	SSL100-310200-000	左发动机脚焊接组件 Left Engine Foot Weld Assembly	1	
8	1629274111	380吸风风扇 380 Suction Fan	1	
9	1567974151	30.5厚风扇垫块 30.5 Thick Fan Pad	1	
10	800C-100700-G00	联轴器 Coupling	1	
11	000093 000101A	标准型弹性垫圈10 Standard elastic washers 10	26	
12	005783 100352A	六角头螺栓全螺纹M10×35-10.9 Hexagon head bolts full thread	16	
13	000971 000101A	平垫圈10 Flat washer10	26	
14	005783 100401A	六角头螺栓全螺纹M10×40-8.8 Hexagon head bolts full thread	7	
15	000971 000121A	平垫圈12 Flat washer12	4	
16	000093 000121A	标准型弹性垫圈12 Standard elastic washers 12	4	
17	006170 012001A	六角螺母M12 Hexagon nuts M12	4	
18	000093 000061A	标准型弹性垫圈6 Standard elastic washers 6	2	
19	005783 060201A	六角头螺栓全螺纹M6×20-8.8 Hexagon head bolts full thread	2	
20	000971 000061A	平垫圈6 Flat washer6	2	
21	005783 100201A	六角头螺栓全螺纹M10×20-8.8 Hexagon head bolts full thread	3	
22	SSL100-310300-000	右发动机脚组件 Right engine foot assembly	1	
23	SSL100-302000-000	滑移柱塞泵 Piston pumps of skid steer loader	1	
24	SSL100-310001-000	离合器壳 Clutch cover	1	
25	5H60141941	久保田水温传感器过渡Kubota Water Temperature Sensor	1	
26	1E28672841	久保田水温传感器过度Kubota Water Temperature Sensor	1	
27	04717 01700	久保田垫片1 Kubota Gasket 1	1	
28	04717 01200	久保田垫片2 Kubota Gasket 2	1	
29	SSL100-310003-000	离合器安装套 Clutch Mounting Sleeve	1	







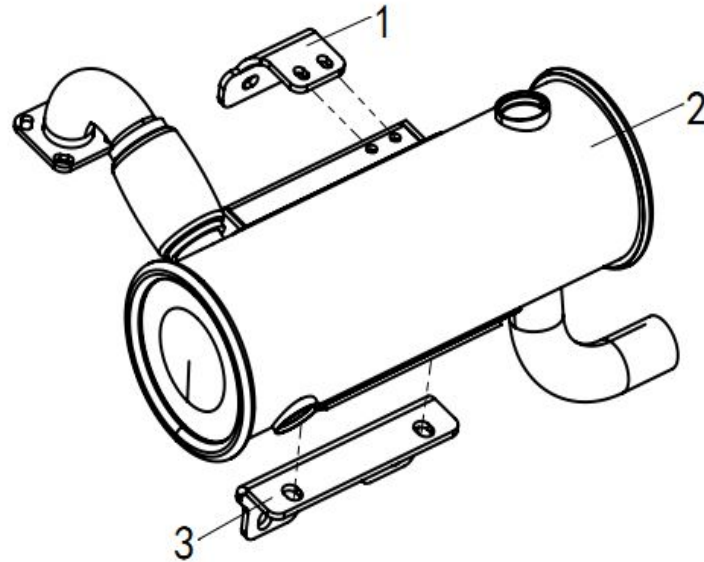
序号No	代码Part No	名称Item	数量Qty	备注Remark
1	T035040	T型卡箍35-40 T-Clamp 35-40	4	
2	1130-340001-G00	减震垫 shock-absorbing cushion	2	
3	SSL100-340001-000	下水管Downpipes	1	
4	SSL100-340002-000	上水管Uppipes	1	
5	K30000 340004	副水箱支架总成 Sub-tank bracket assembly	1	
6	K30G00 345000	副水箱92638340 Sub-tank 92638340	1	
7	SSL100-340100-000	滑移散热器总成 Radiator assembly	1	

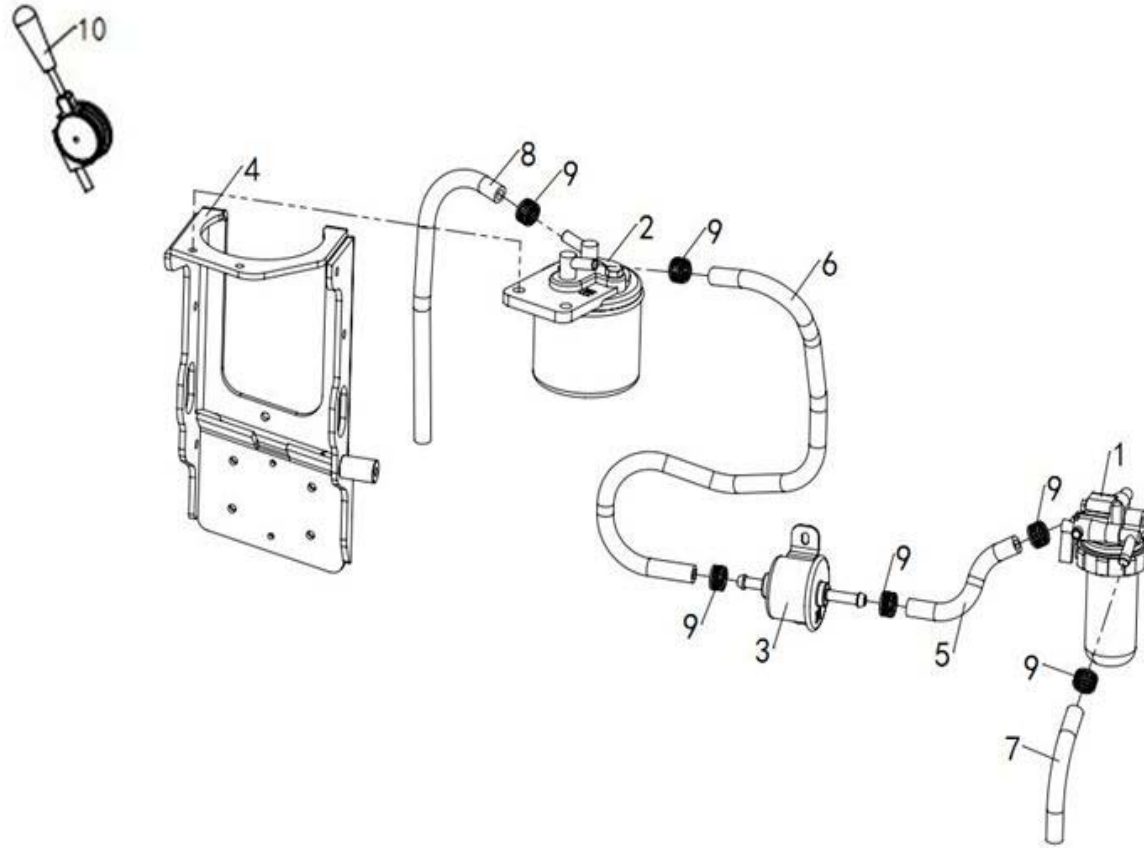


SHANGQI

排气系统Exhaust systems

SSL100多功能装载机零部件图册
SSL100 skid steer loader parts list





第四章 车体系统

Chapter 4 Vechile system

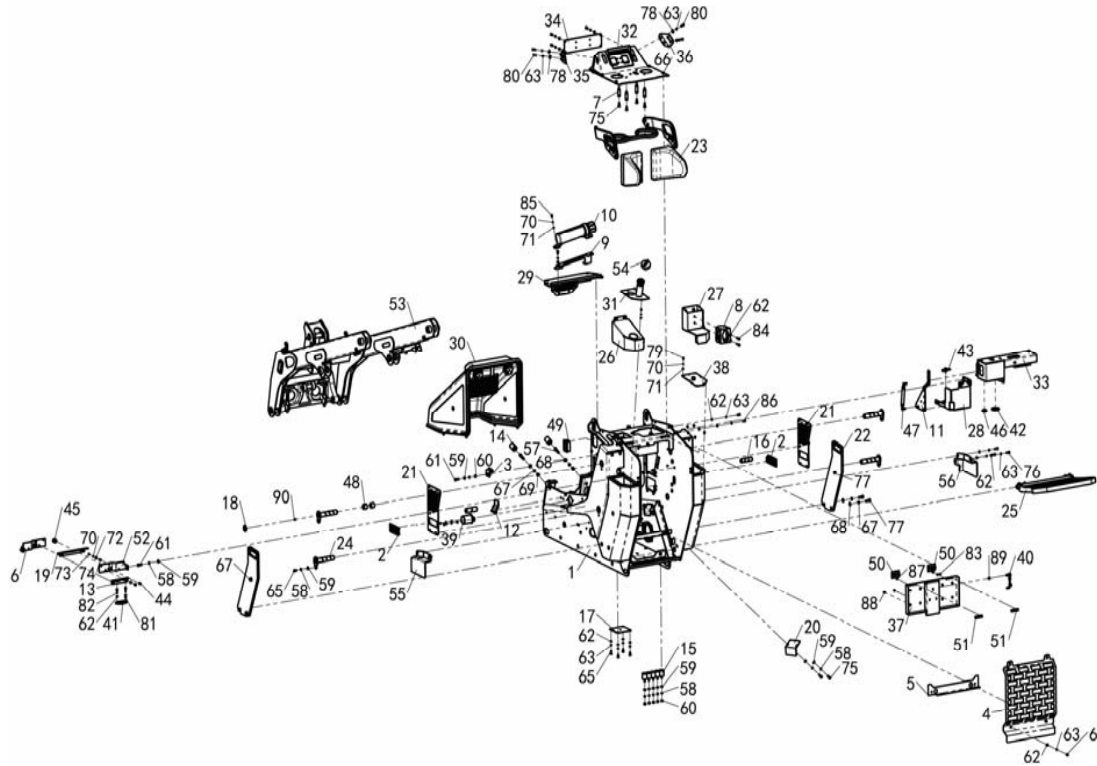


SHANGQI

车体系统总成 Vehicle system assembly

SSL100多功能装载机零部件图册

SSL100 skid steer loader parts list



D 车体系统总成 Vehicle system assembly

4-2

序号Nc	代码Part No	名称Item	数量Qty	备注Remark
1	SSL100-410000-000	车架焊接组件	1	Frame Welding Assembly
2	1030-441004-G00	进风百叶窗	2	Air intake shutter
3	SSL100-400001-000	托板	1	Pallets
4	SSL100-400002-000	水箱后部防护板	1	Rear Tank Guard
5	SSL100-400003-000	隔热条	1	Heat insulating strip
6	SSL100-400004-000	散热器左上连接板	1	Upper left radiator panel
7	SSL100-400006-000	扶手连接螺杆	4	Armrest Connection Screw
8	SSL100-400007-000	茶杯座	1	teacup holders
9	SSL100-400008-000	文件筒安装板	1	Document Cylinder Mounting Plate
10	SSL100-400009-000	文件储藏筒	1	File Storage Cylinders
11	SSL100-400010-000	电瓶中间拉板	1	Battery centre plate
12	SSL100-400011-000	两位三通阀安装板	1	Two-position three-way valve mounting plate
13	SSL100-400012-000	依维柯锁安装板	1	Iveco lock mounting plate
14	SSL100-400013-000	尼龙减震块	2	Nylon shock absorber block
15	SSL100-400015-000	防撞限位胶块 VE50 40 M10螺纹长23	5	Anti-collision limit block VE50 40 M10 thread length 23
16	SSL100-400016-000	举升缸前销轴	2	Front lift cylinder pin
17	SSL100-400017-000	放油塞封板	1	Oil drain plug sealing plate
18	SSL100-400018-000	调整垫圈	12	Adjustment washer
19	SSL100-400019-000	上密封衬板	1	Upper sealing liner
20	SSL100-400020-000	右侧板维护孔封板	1	Right side plate maintenance hole sealing plate
21	SSL100-400021-000	网板安装板	2	Mesh plate mounting plate
22	SSL100-400022-000	副配重(12.5kg)	2	Counterweight (12.5kg)
23	SSL100-400100-000	防护装配组件	1	Protective assembly
24	SSL100-400200-000	后销轴总成	4	Rear pin shaft assembly
25	SSL100-400300-000	踏板装配体	1	Pedal assembly
26	SSL100-400400-000	左油箱顶部装饰件	1	Left tank top trim
27	SSL100-400500-000	右油箱上部挡板组件	1	Right fuel tank top baffle assembly
28	SSL100-400600-000	电瓶安装底座	1	Battery mounting base
29	SSL100-400700-000	前封盖组件	1	Front Cover Assembly
30	SSL100-400800-000	尾罩装配组件	1	Tailcover assembly

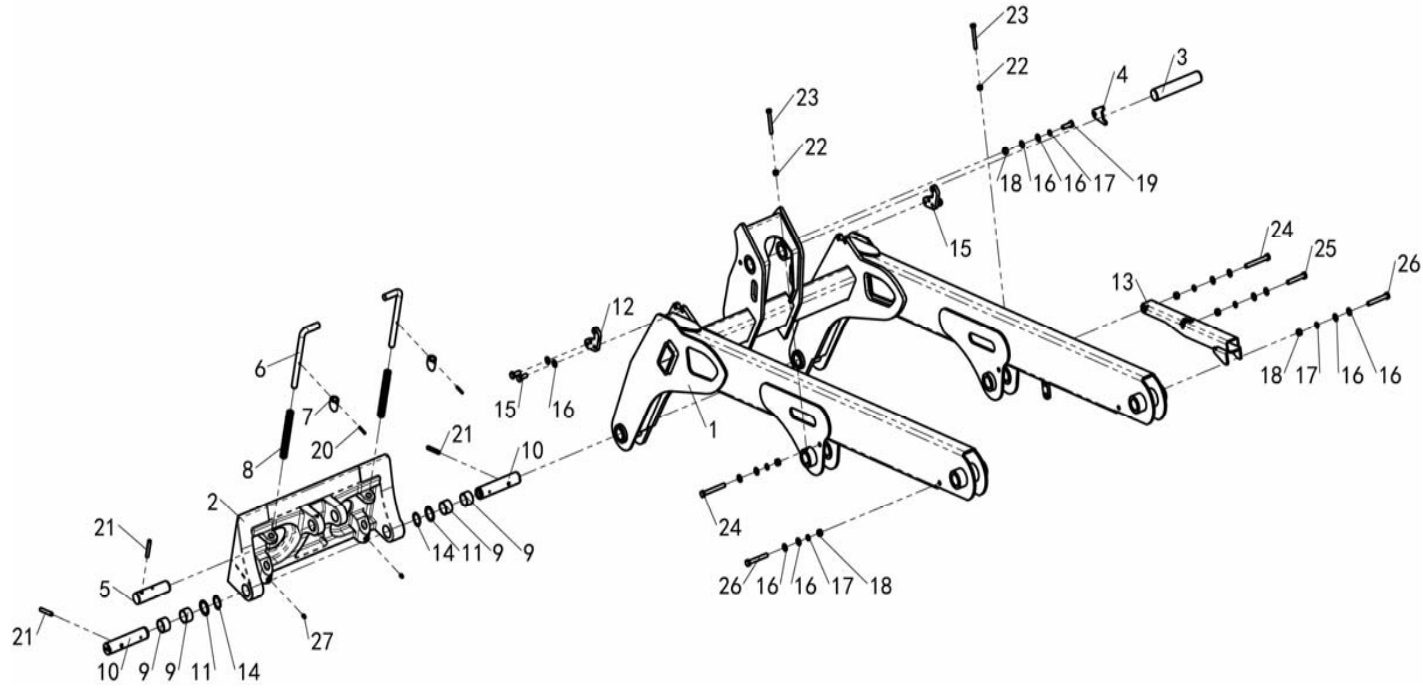
序号Nc	代码Part No	名称Item	数量Qty	备注Remark
31	SSL100-400900-000	左油箱盖板组件	1	Left Fuel Tank Cover Assembly
32	SSL100-401000-000	仪表盘板焊接组件	1	Instrument panel welding kit
33	SSL100-401500-000	左右连接座	1	Left and right connectors
34	SSL100-400014-000	仪表检修前封盖	1	Instrument access front cover
35	SSL100-401100-000	左扶手前连接组件	1	Left armrest front connector assembly
36	SSL100-401200-000	右扶手前连接座	1	Right armrest front connector
37	SSL100-401300-000	靠背安装背板组件	1	Backrest mounting back plate assembly
38	SSL100-401600-000	右油箱盖组件	1	Right Fuel Tank Cover Assembly
39	SSL100-401700-000	排气套管组件	1	Exhaust sleeve assembly
40	SSL100-401800-000	靠垫卡扣	1	Cushion clips
41	0027-440018-000	依维柯锁	1	Iveco lock
42	810-440011-000	进气口护圈	1	Air intake ring
43	1130-700104-001	电瓶固定压板	1	Battery mounting plate
44	1130-340007-G00	套	1	Sleeve
45	1130-340006-G00	水箱上减振垫	2	Damping pads on tank
46	1230-470010-000	出线护圈	2	Outlet retaining ring
47	850A-470400-G00	气弹簧 (不带护套)	2	Gas spring (without cover)
48	1130-431012-000	钢背轴承32X36X30	1	Steel back bearing 32X36X30
49	A22A5-12181	大吨位进风百叶窗	2	Large tonnage air intake shutter
50	850-470009-G00	合页	1	Hinge
51	850-470003-000	铰链固定板	2	Hinge Mounting Plate
52	SSL100-400005-000	散热器右上安装板	2	Radiator upper right mounting plate
53	SSL100-420000-000	大臂装配组件	1	Big arm assembly kit
54	K30G00 313000	燃油加油盖	1	Fuel filler cap
55	SSL100-400024-000	左马达油管挡板	1	Left motor fuel line baffle plate
56	SSL100-400025-000	右马达油管挡板	1	Right motor fuel line baffle plate
57	000701 120501A	内六角圆柱头螺钉M12×50-8.8	1	Hexagon socket cheese head screws M12×50-8.8
58	000093 000101A	标准型弹性垫圈10	2	Standard elastic washer 10
59	000971 000101A	平垫圈10	18	Flat washer 10
60	006170 010001A	六角螺母M10	19	Hexagon nuts M10

D 车体系统总成 Vechile system assembly
4-4

序号Nc	代码Part No	名称Item		数量Qty	备注Remark
61	005783 100301A	六角头螺栓全螺纹M10×30-8.8	Hexagon head bolts full thread M10×30-8.8	3	
62	000971 000081A	平垫圈8	Flat washers8	90	
63	000093 000081A	标准型弹性垫圈8	Standard elastic washers8	99	
64	005783 080121A	六角头螺栓全螺纹M8×12-8.8	Hexagon head bolts full thread M8×12-8.8	6	
65	005783 080201A	六角头螺栓全螺纹M8×20-8.8	Hexagon head bolts full thread M8×20-8.8	39	
66	005783 080161A	六角头螺栓全螺纹M8×16-8.8	Hexagon head bolts full thread M8×16-8.8	13	
67	000093 000121A	标准型弹性垫圈12	Standard elastic washers12	8	
68	000971 000121A	平垫圈12	Flat washer 12	8	
69	006170 012001A	六角螺母M12	Hexagon nuts M12	2	
70	000093 000061A	标准型弹性垫圈6	Standard type elastic washers6	20	
71	000971 000061A	平垫圈6	Flat washers 6	20	
72	000096 060181A	加大平垫6X18	Enlarged flat washers 6X18	2	
73	006170 006001A	六角螺母M6	Hexagon nuts M6	2	
74	005783 060201A	六角头螺栓全螺纹M6×20-8.8	Hexagon head bolts full thread M6×20-8.8	2	
75	005783 100251A	六角头螺栓全螺纹M10×25-8.8	Hexagon head bolts full thread M10×25-8.8	6	
76	005783 080251A	六角头螺栓全螺纹M8×25-8.8	Hexagon head bolts full thread M8×25-8.8	29	
77	005783 120351A	六角头螺栓全螺纹M12×35-8.8	Hexagon head bolts full thread M12×35-8.8	6	
78	000096 080241A	加大平垫8X24	Enlarged flat washers 8X24	13	
79	000702 060121A	内六角平圆头螺钉M6X12-8.8	Hexagon socket flat round head screws M6X12-8.8	16	
80	000702 080252A	内六角平圆头螺钉M8X25-10.9	Hexagon socket flat round head screws M8X25-10.9	4	
81	006170 008001A	六角螺母M8	Hexagon nuts M8	4	
82	005783 080301A	六角头螺栓全螺纹M8×30-8.8	Hexagon head bolts full thread M8X30-8.8	2	
83	000819 050101A	十字槽沉头螺钉M5X10-8.8	Cross recessed countersunk head screws M5X10-8.8	6	
84	005783 080351A	六角头螺栓全螺纹M8×35-8.8	Hexagon head bolts full thread M8×35-8.8	2	
85	005783 060161A	六角头螺栓全螺纹M6×16-8.8	Hexagon head bolts full thread M6×16-8.8	2	
86	000702 080202A	内六角平圆头螺钉M8X20-10.9	Hexagon socket flat round head screws M8X20-10.9	8	
87	000819 050122A	十字槽沉头螺钉M5X12-8.8	Cross recessed countersunk head screws M5X12-8.8	6	
88	000702 080121A	内六角平圆头螺钉M8X12-8.8	Hexagon socket flat round head screws M8X12-8.8	10	
89	008891 008001A	1型非金属嵌件六角锁紧螺母M8	Type 1 non-metallic insert hexagonal lock nuts M8	1	
90	079401 006101A	直通式压注油杯M6x1.0	Straight-through press-fit oil cup M6x1.0	2	

D 车体系统总成 Vechile system assembly

4-5



D1 大臂总成

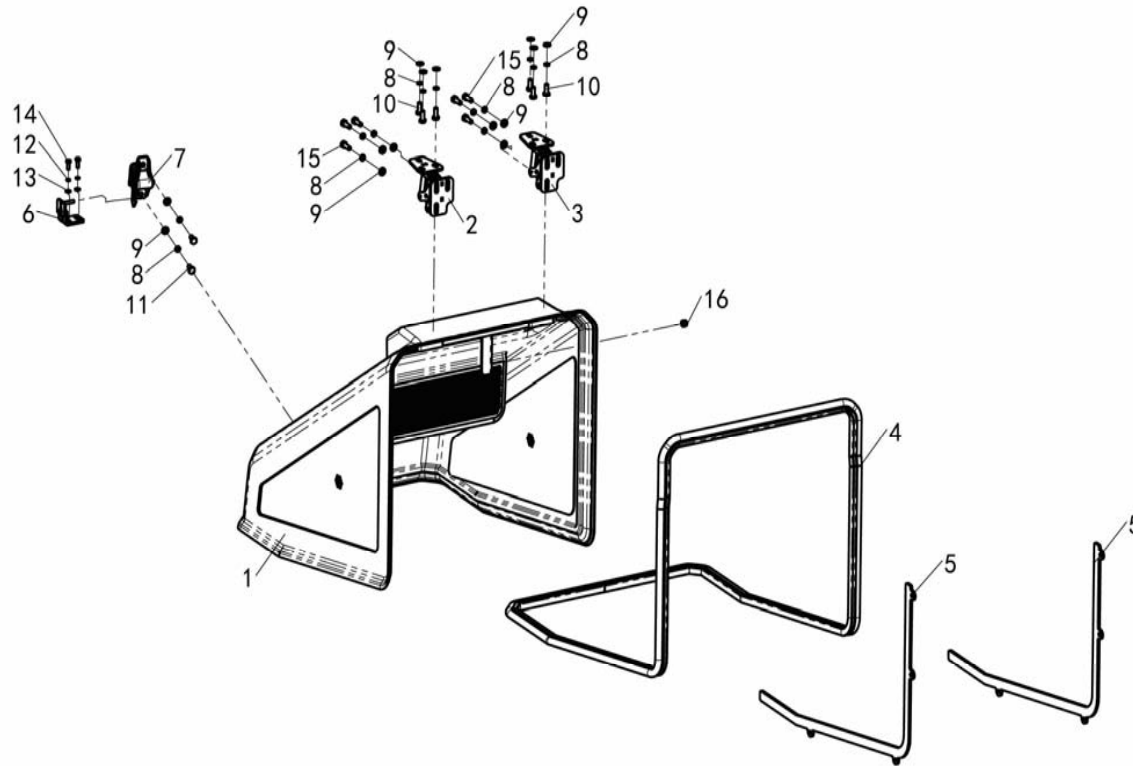
序号Nc	代码Part No	名称Item		数量Qty	备注Remark
1	SSL100-420100-000	大臂总焊件	Arm general weldment	1	
2	SSL100-420201-000	铸钢挂架	Cast Steel Hanger	1	
3	SSL100-420001-000	翻斗缸后销轴	Rear pin of dump cylinder	1	
4	SSL100-420002-000	销轴卡板	Pin Plate	1	
5	SSL100-420003-000	翻斗缸前销轴	Front pin of dump cylinder	1	
6	SSL100-420004-000	锁销	Locking pin	2	
7	SSL100-420005-000	锁扣	Latch	2	
8	SSL100-420006-000	弹簧	Spring	2	
9	SSL100-420007-000	轴套32X36X23	Sleeve 32X36X23	4	
10	SSL100-420008-000	挂架主销轴	Hanger main play shaft	2	
11	SSL100-420009-000	挡圈32.5X42.5X1.5	Retaining ring 32.5X42.5X1.5	2	
12	SSL100-420010-000	右快速接头固定板	Right quick coupling fixing plate	2	
13	SSL100-420300-000	举升缸定位器总成	Lift cylinder positioner assembly	1	
14	008941 000321A	轴用弹性挡圈32	Shaft elastic retaining ring 32	2	
15	005783 100251A	六角头螺栓全螺纹M10×25-8.8	Hexagon head bolts full thread M10×25-8.8	4	
16	000971 000101A	平垫圈10	Flat washer 10	16	
17	000093 000101A	标准型弹性垫圈10	Standard type elastic washer 10	6	
18	006170 010001A	六角螺母M10	Hexagon nuts M10	6	
19	005783 100301A	六角头螺栓全螺纹M10×30-8.8	Hexagon head bolts full thread M10×30-8.8	1	
20	008791 040301A	弹性圆柱销4×30	Elastic cylindrical pin4×30	2	
21	008791 080601A	弹性圆柱销8×60	Elastic cylindrical pin8×60	3	
22	008891 008001A	1型非金属嵌件六角锁紧螺母M8	Type 1 non-metallic insert hexagonal lock nuts M8	2	
23	005783 080651A	六角头螺栓全螺纹M8×65-8.8	Hexagon head bolts full thread M8×65-8.8	2	
24	005783 100801A	六角头螺栓全螺纹M10×80-8.8	Hexagon head bolts full thread M10×80-8.8	2	
25	005783 100601A	六角头螺栓全螺纹M10×60-8.8	Hexagon head bolts full thread M10×60-8.8	1	
26	005783 100701A	六角头螺栓全螺纹M10×70-8.8	Hexagon head bolts full thread M10×70-8.8	2	
27	079401 006101A	直通式压注油杯M6x1.0	Straight-through oil cup M6x1.0	2	



SHANGQI

尾罩总成

SSL100多功能装载机零部件图册
SSL100 skid steer loader parts list



D2 尾罩总成

4-8

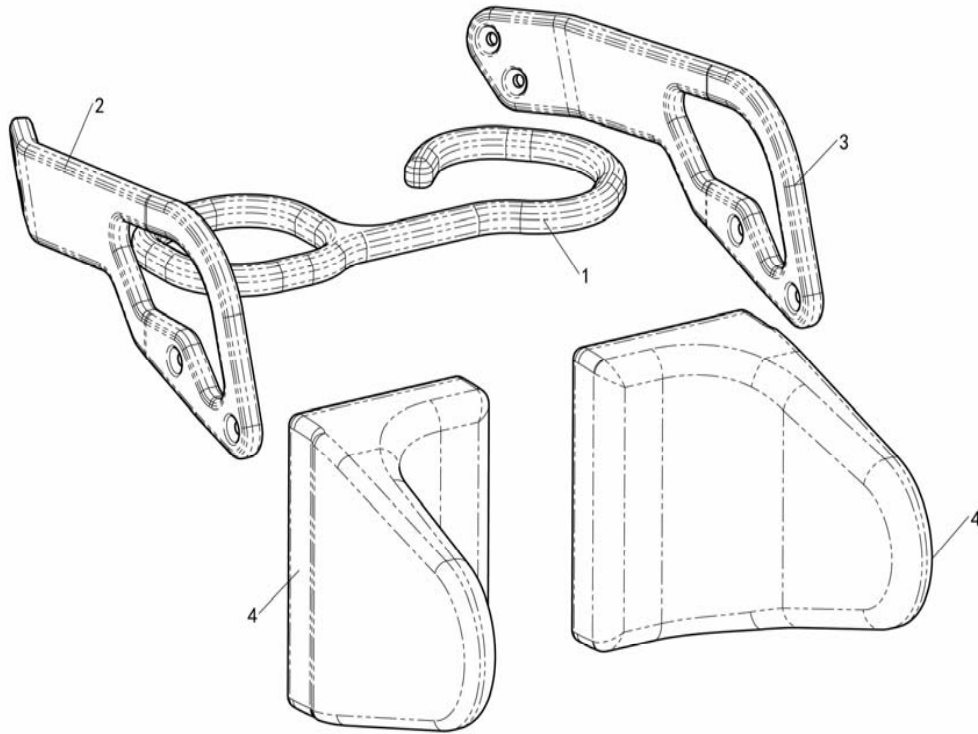


SHANGQI

防护装配组件

SSL100多功能装载机零部件图册

SSL100 skid steer loader parts list

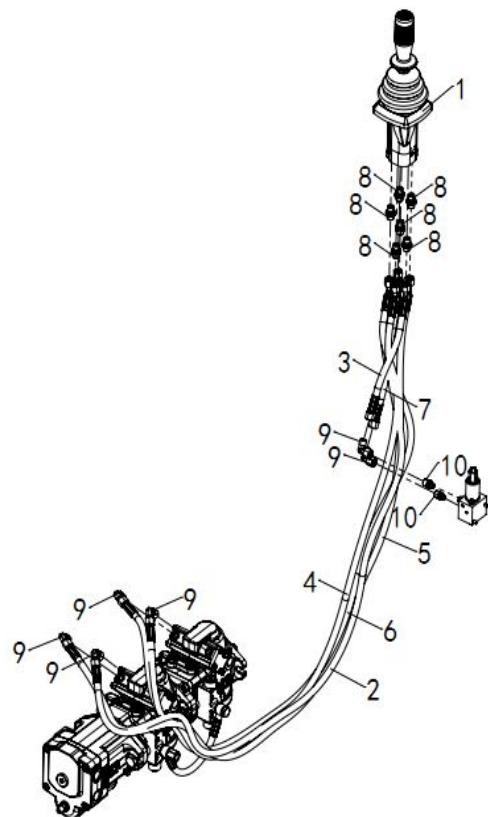


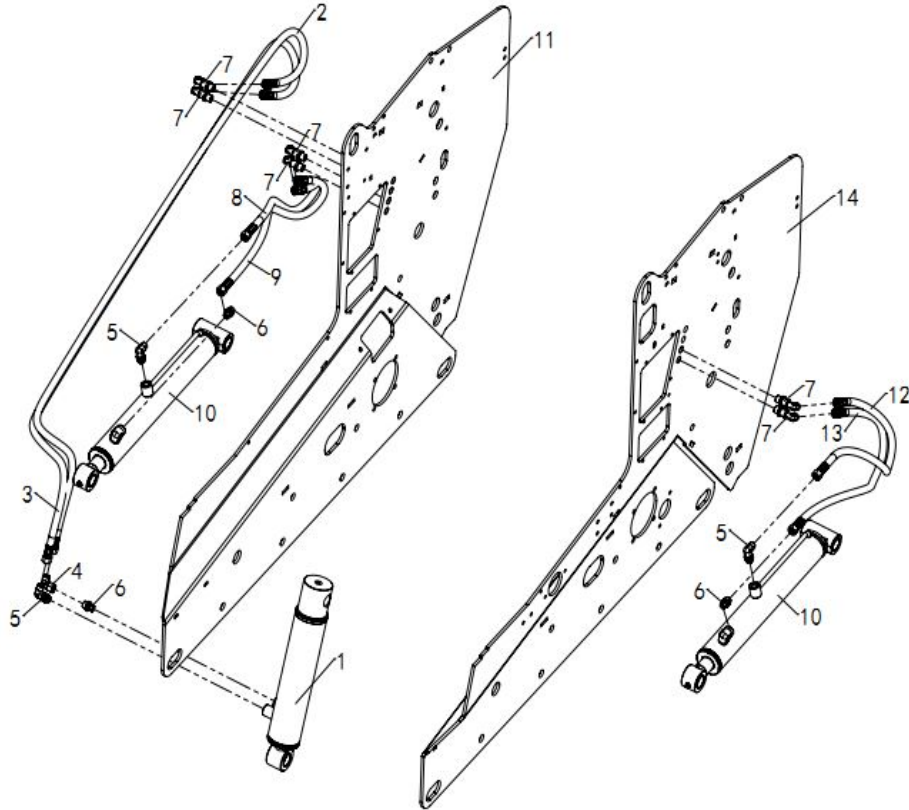
D3 防护装配组件

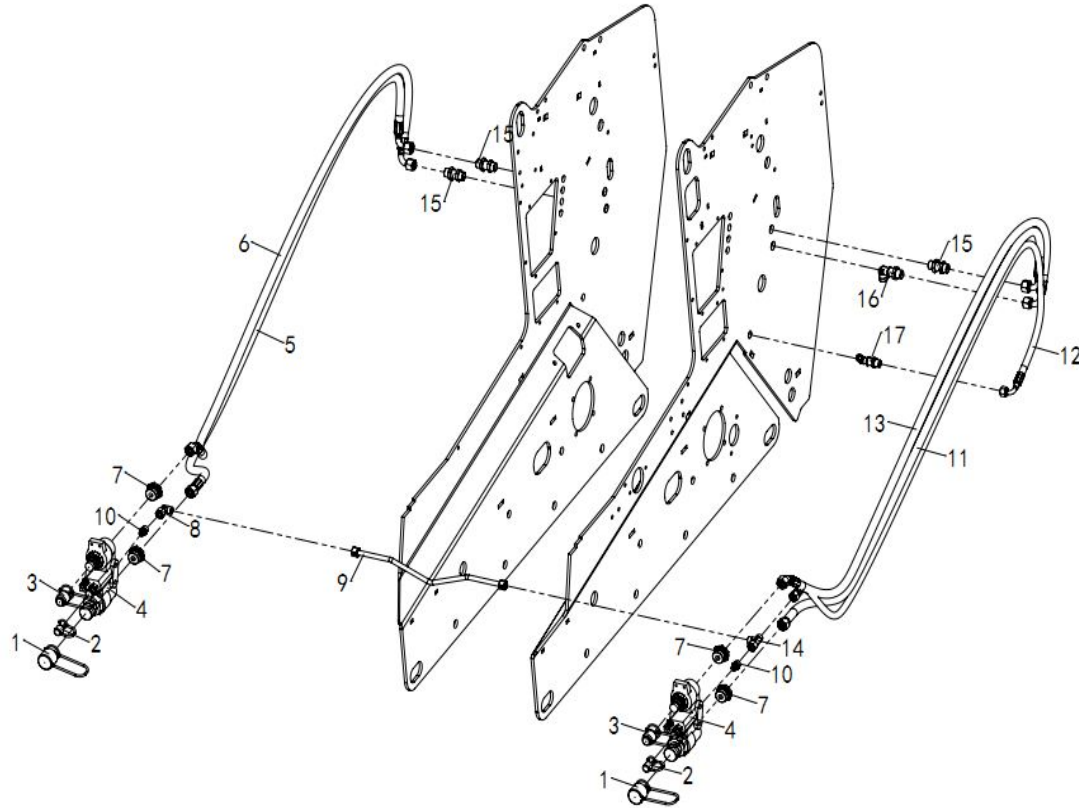
4-10

第五章 液压系统

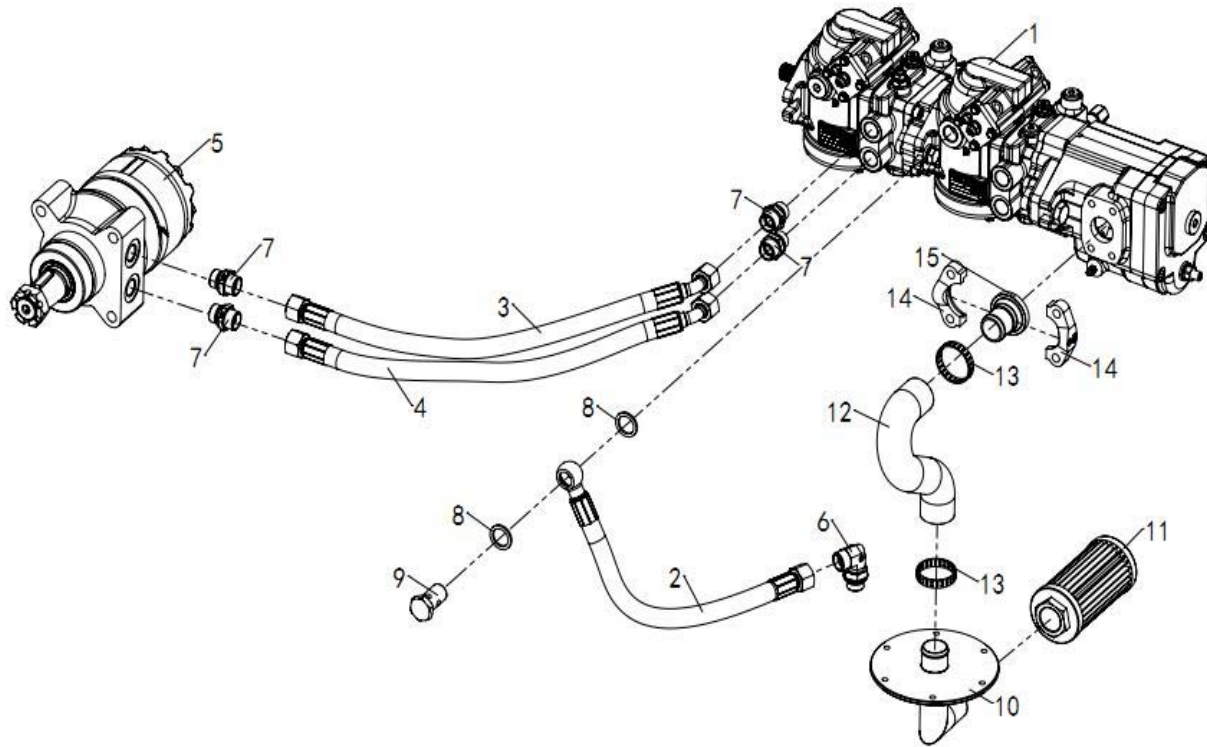
Chapter 5 Hydraulic System



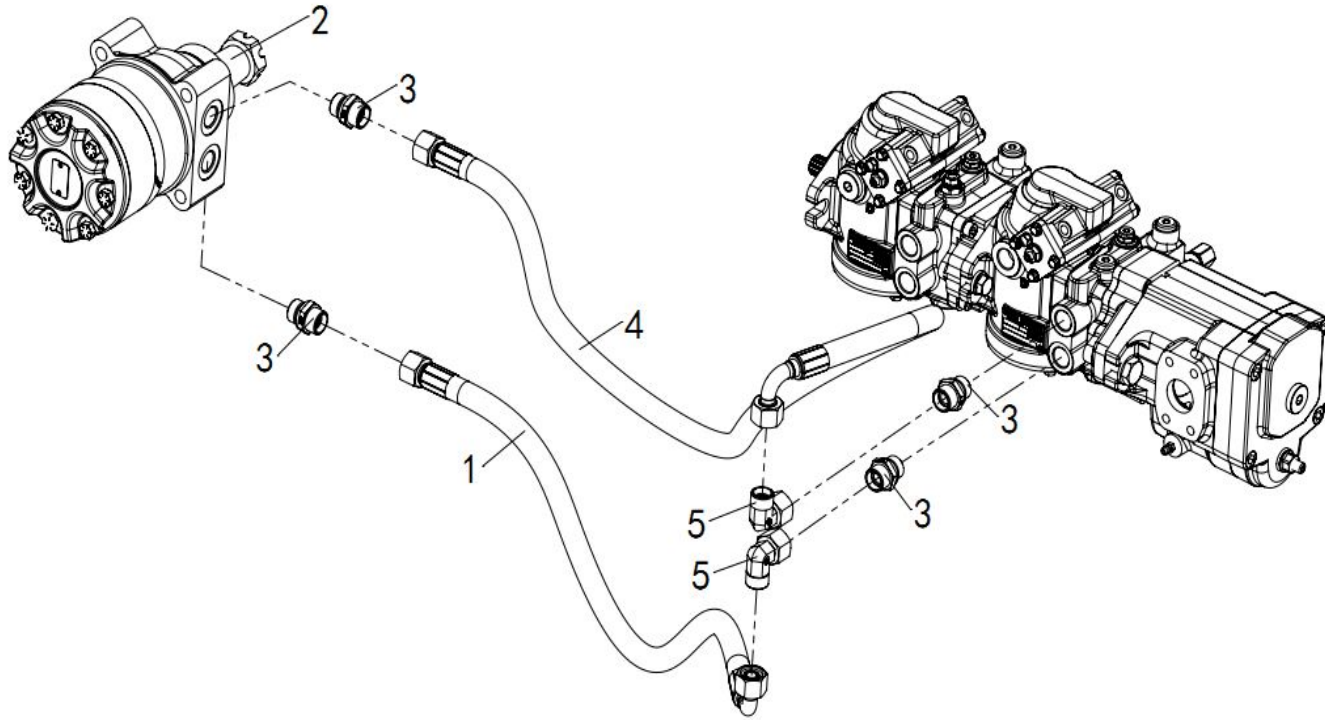


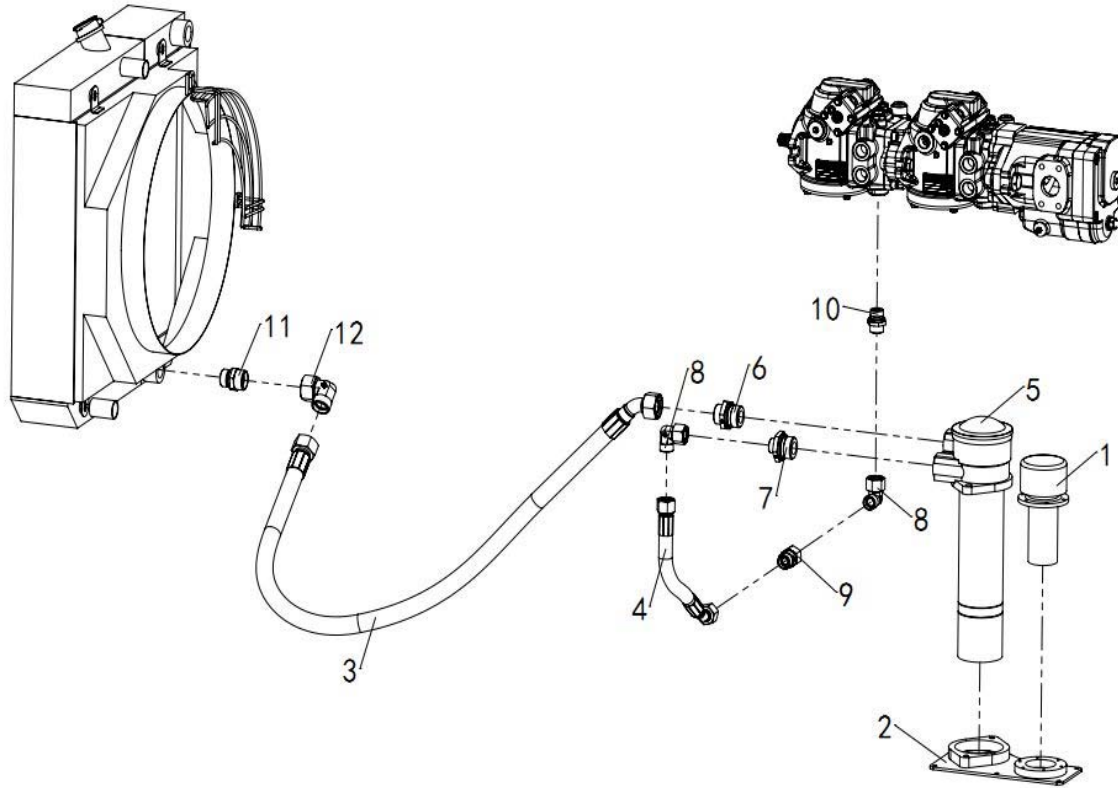


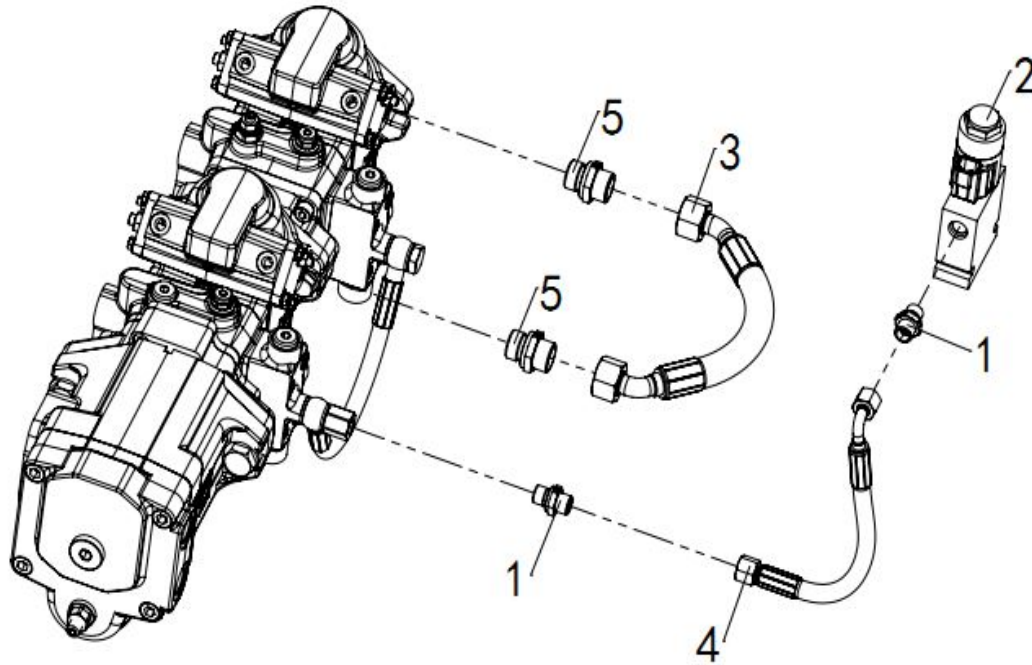
序号No	代码Part No	名称Item	数量Qt	备注Remark
1	LSQ-FF PDC-1-2F	母接头防尘套/红 1/2	2	Female connector dust jacket/red 1/2
2	LSQ-FF PDC-3-8	公接头防尘套/蓝 3/8公	2	Male connector dust cap/blue 3/8
3	LSQ-FF PDC-1-2M	公接头防尘套/蓝 1/2	2	Male connector dust boot/blue 1/2
4	LSQ-HDB-04	模块阀	2	Modular Valve
5	SSL100-614300-000	胶管总成 (右后上过板-右快接下口)	1	Hose Assembly (Right Rear Upper Cross Plate - Right Quick Connect Lower Port)
6	SSL100-614200-000	胶管总成 (右后下过板-右快接上口)	1	Hose assembly (right rear lower crossing-right quick connect upper port)
7	1CO-22-16	M22*1.5转1 5/16 (O型圈) 直通接头	4	M22*1.5 to 1 5/16 (O-ring) Straight Fitting
8	0002C9 0018WDA	M18X1.5内外转换直角接头	1	M18X1.5 internal and external conversion right-angle joint '
9	SSL100-614400-001	回油钢管	1	Oil return steel pipe
10	1CO-18-06	M18*1.5转9/16 (O型圈) 直通接头	2	M18*1.5 to 9/16 (O-ring) Straight Fitting '
11	SSL100-614000-000	胶管总成 (左后上过板-左快接下口)	1	Hose assembly (left rear upper over-plate - left quick connect lower port)
12	SSL100-614100-000	胶管总成 (举升缸左下单独过板-左快接T口)	1	Hose assembly (lifting cylinder left lower separate crossing plate - left quick connect T port)
13	SSL100-613900-000	胶管总成 (左后下过板-左快接上口)	1	Hose assembly (left rear lower crossing plate - left quick connect upper port) '
14	0000CC 001800A	M18*1.5三通接头 (边螺母)	1	M18*1.5 Tee fitting (side nut) '
15	006CLN 002200A	M22*1.5带螺母直通过板接头	3	M22*1.5 Straight through plate fitting with nut '
16	06C9LN 002200A	直角过板接头M22X1.5	1	M22X1.5 right-angle passing plate connector
17	06C9LN 001800A	M18*1.5直角过板接头	1	M18*1.5 Right Angle Cross Plate Fitting

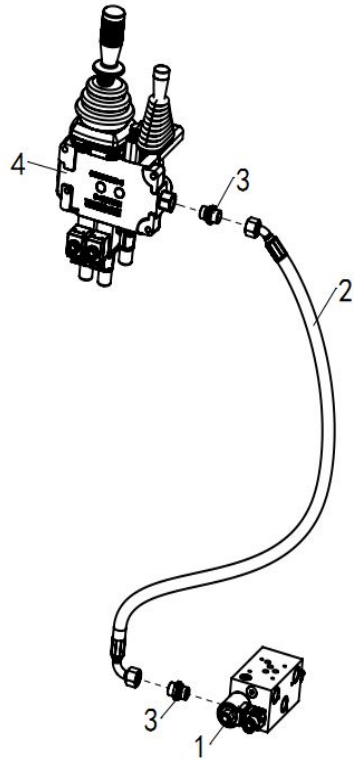


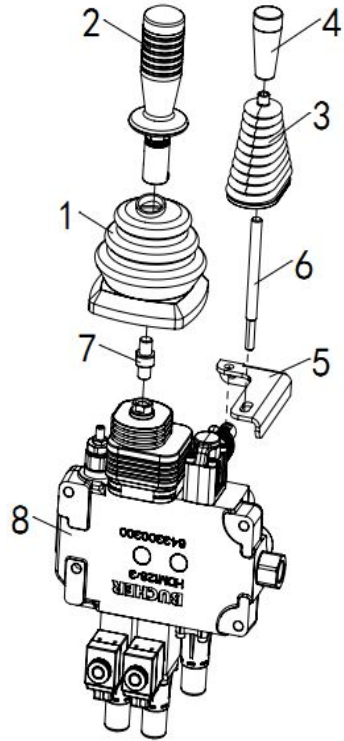
序号No	代码Part No	名称Item	数量Qt	备注Remark
1	SSL100-302000-000	滑移柱塞泵	1	Slide piston pumps
2	SSL100-610800-000	胶管总成 (柱塞泵L3口三通外侧-液压油箱前回油口)	1	Hose assembly (piston pump L3 port tee outside - hydraulic oil tank front return port)
3	SSL100-610500-000	胶管总成 (柱塞泵后上2口-右马达上A口)	1	Hose assembly (piston pump rear upper 2 port - right motor upper A port) '
4	SSL100-610400-000	胶管总成 (柱塞泵后下B1口-右马达下A口)	1	Hose assembly (piston pump rear lower B1 port - right motor lower A port) '
5	SSL100-600700-001	马达400	1	Motor 400
6	001CG9 2208OGA	M22X1.5转G1/2直角可调向接头	1	M22X1.5 to G1/2 Right Angle Adjustable Fitting '
7	0001CB 2208WDA	M22*1.5转G1/2直通接头	4	M22*1.5 to G1/2 Straight Fitting
8	000982 00G1-2A	组合密封垫圈G1/2	2	Combination sealing washer G1/2
9	00720B 000008A	G1/2铰制螺栓	1	G1/2 reamed bolt
10	SSL100-600400-000	过滤器安装盖组件	1	Filter mounting cover assembly
11	850-601100-000	齿轮泵吸油滤芯WU63*180	1	Gear pump oil suction filter element WU63*180 '
12	SSL100-600001-000	工作泵吸油软管	1	Work pump oil suction hose
13	S00045	双钢丝卡箍45	2	Double steel wire clamp 45
14	0000FL 002000A	对开法兰夹FL-20	2	Folio flange clamp FL-20
15	SSL100-600002-000	吸油接头	1	Oil suction connector

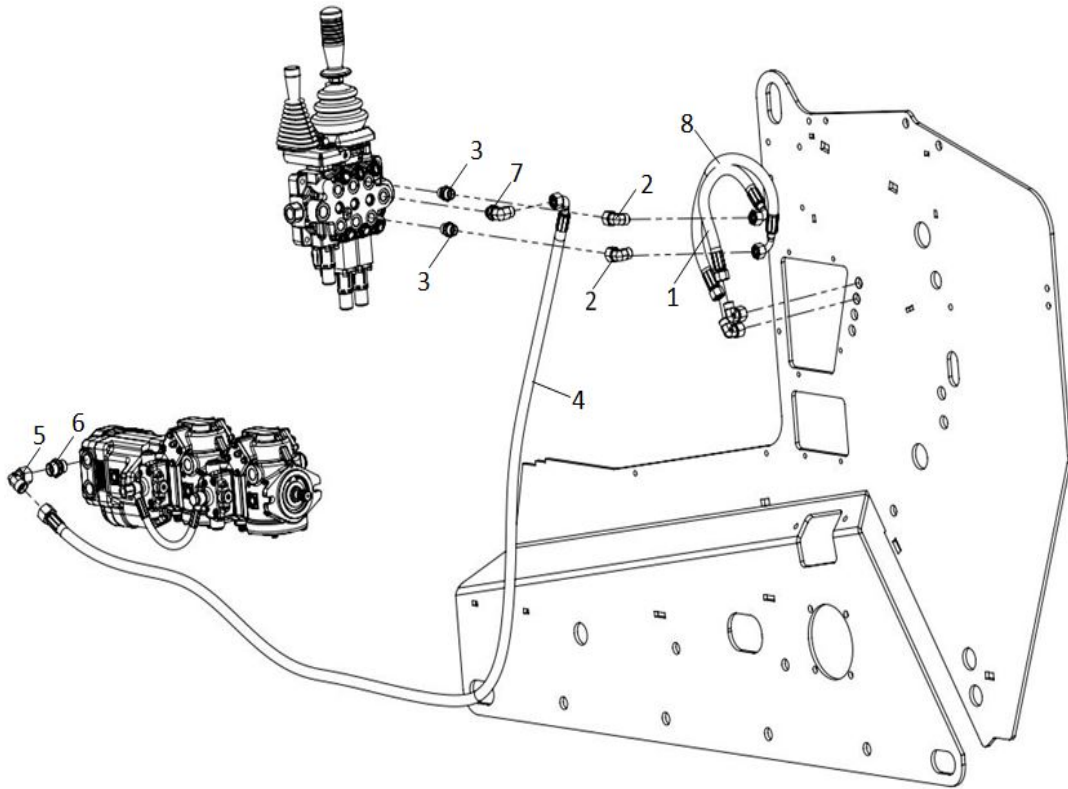














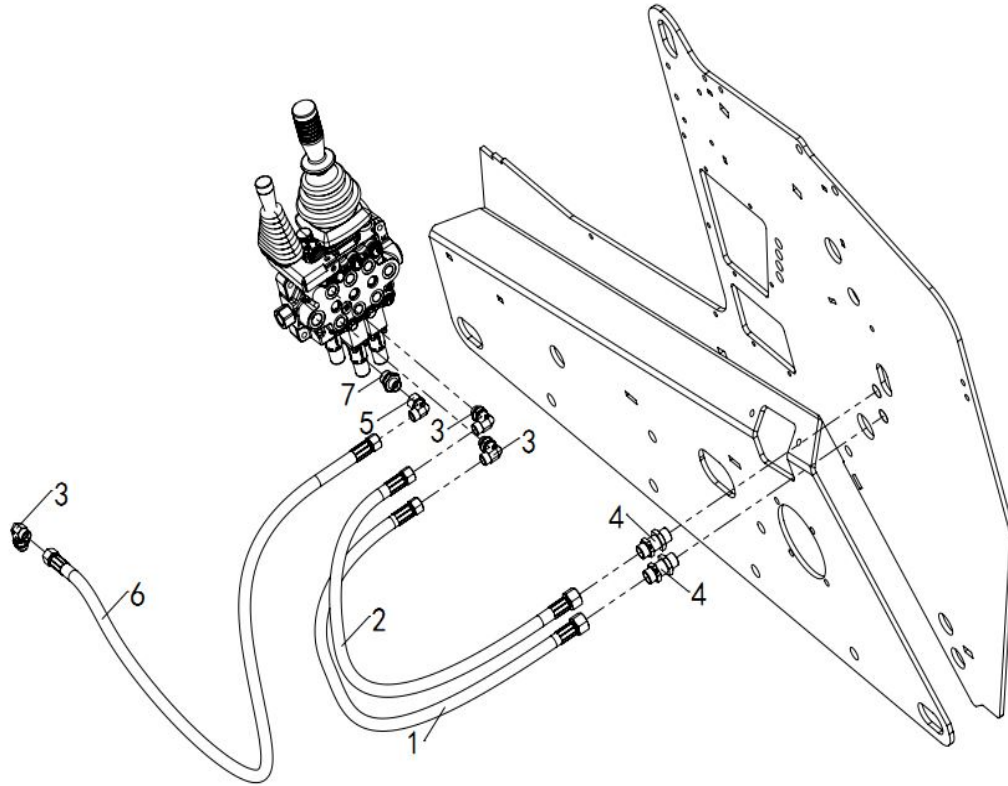
SHANGQI

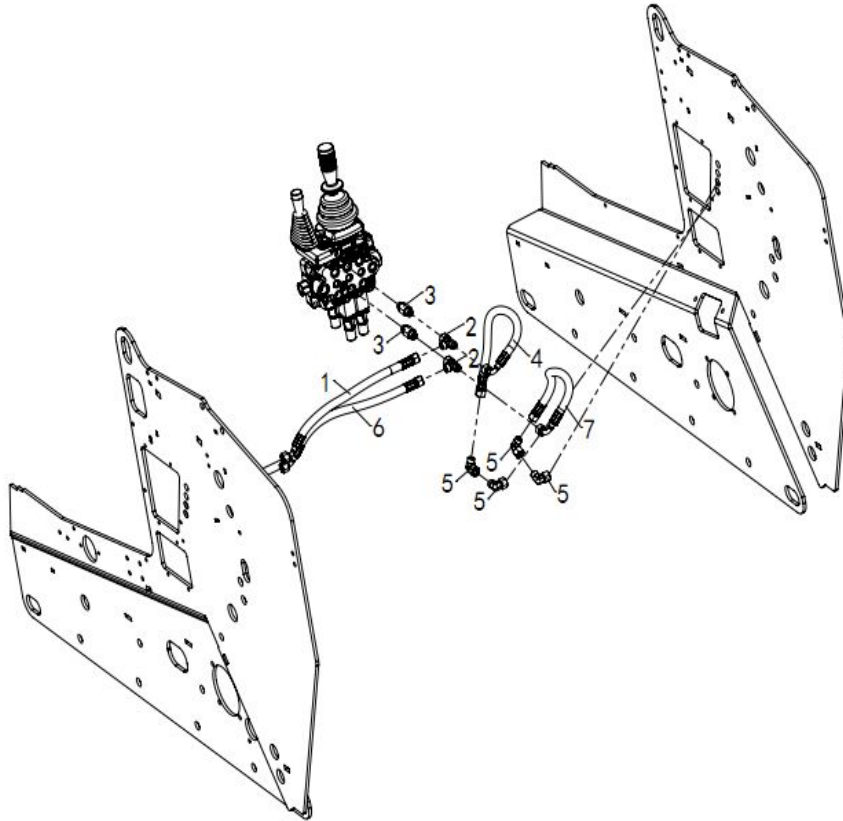
Hydraulic System 液压系统

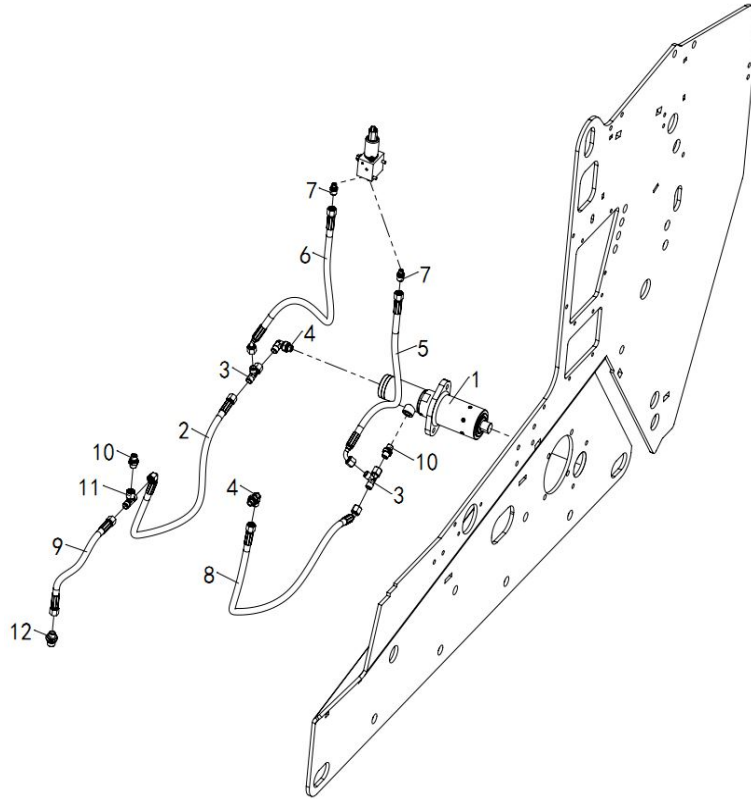
SSL100多功能装载机零部件图册

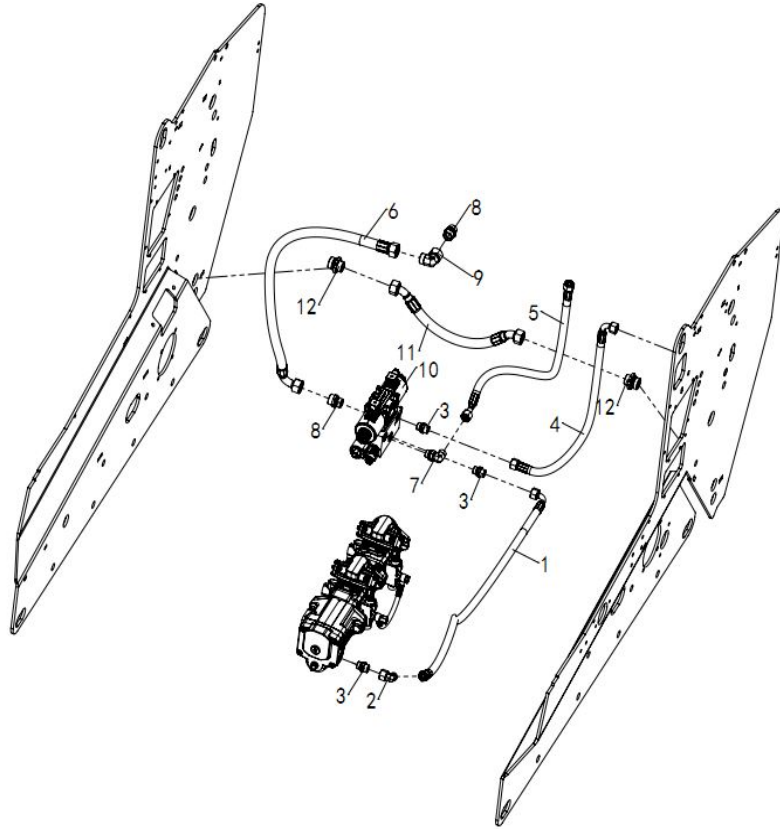
SSL100 skid steer loader parts list

序号No	代码Part No	名称Item	数量Qt	备注Remark
1	SSL100-612800-000	胶管总成 (多路阀B1口-右中上数第1过板)		Hose assembly (Multiway valve B1 port - 1st overboard from the upper right centre)
2	0002C9 0018WDA	M18X1.5内外转换直角接头	4	M18X1.5 internal and external conversion right-angle coupling '
3	0001CB 1806WDA	M18*1.5转G3/8直通接头	2	M18*1.5 to G3/8 Straight Fitting
4	SSL100-612100-000	胶管总成 (柱塞泵A3口-多路阀P1口)	1	Hose assembly (piston pump A3 port-multi-way valve P1 port) '
5	0002C9 0022WDA	M22X1.5内外转换直角接头	1	M22X1.5 internal and external right-angle adapter '
6	0001CB 2208WDA	M22*1.5转G1/2直通接头	1	M22*1.5 to G1/2 Straight Fitting
7	001CG9 1806OGA	M18X1.5转G3/8直角可调向接头	1	M18X1.5 to G3/8 right-angle adjustable joint '
8	SSL100-612700-000	胶管总成 (多路阀A1口-右中上数第2过板)	1	Hose Assembly (Multiway Valve A1 Port - Right Middle Upper 2nd Overboard) '
	SSL100-302000-000	滑移柱塞泵	1	skid-steer piston pumps
	SSL100-600600-000	多路阀组件	1	Multi-way valve assembly
	SSL100-410201-000	主右侧板	1	Main Right Side Plate











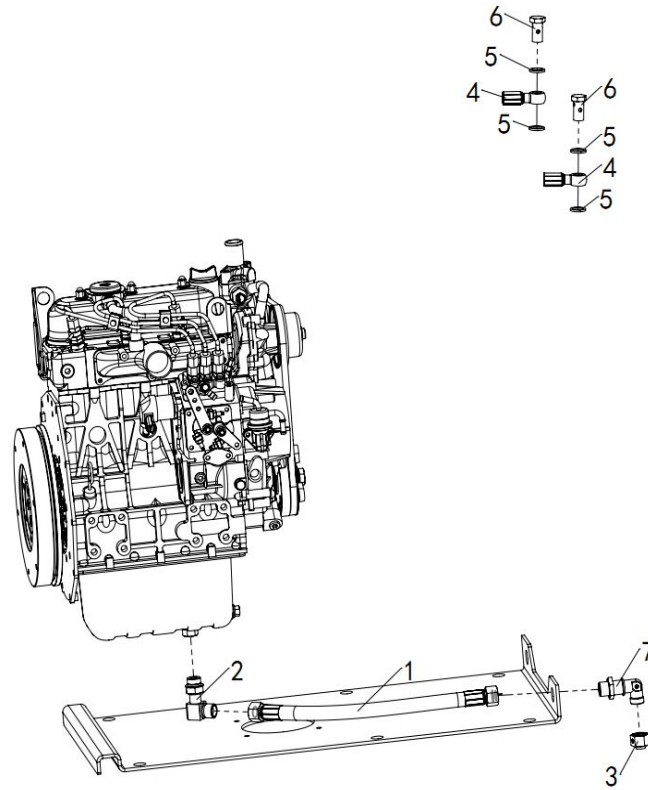
SHANGQI

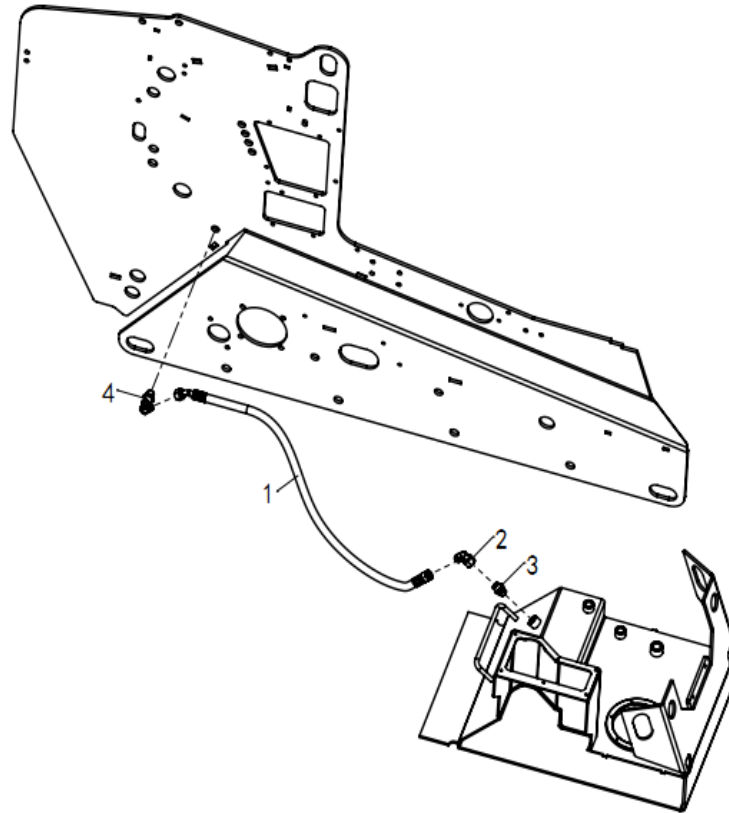
Hydraulic System 液压系统

SSL100多功能装载机零部件图册

SSL100 skid steer loader parts list

序号No	代码Part No	名称Item		数量Qt	备注Remark
1	SSL100-612200-000	胶管总成 (柱塞泵B3口-板式换向阀P2口)	Hose assembly (piston pump B3 port-plate reversing valve P2 port)	1	
2	0002C9 0022WDA	M22X1.5内外转换直角接头	M22X1.5 internal and external conversion right-angle fitting	1	
3	0001CB 2208WDA	M22*1.5转G1/2直通接头	M22*1.5 to G1/2 right angle fitting	3	
4	SSL100-612600-000	胶管总成 (板式阀B口-水箱左后上过板)	Hose assembly (plate valve B port - tank left rear upper crossing plate)	1	
5	SSL100-612500-000	胶管总成 (板式阀A口-水箱左后下过板)	Hose assembly (plate valve A port - tank left rear lower crossing plate)	1	
6	SSL100-612400-000	胶管总成 (板式阀T口-油散上口)	Hose assembly (plate valve T port - oil diffuser upper port)	1	
7	001CG9 2208OGA	M22X1.5转G1/2直角可调向接头	M22X1.5 to G1/2 Right Angle Adjustable Fitting	1	
8	0001CB 3012WDA	M30*2转G3/4直通接头	M30*2 to G3/4 Straight Fitting	2	
9	0002C9 0030WDA	M30X2内外转换直角接头	M30X2 internal and external conversion right-angle fitting	1	
10	SWH-G03-C-DC-20	10通径三位四通换向阀	10 diameter three-position four-way reversing valve	1	
11	SSL100-615000-000	胶管总成 (柴油箱下左右连通管)	Hose assembly (diesel tank under the left and right connecting pipe)	1	
12	0001CB 3016WDA	M30*2转G1直通接头	M30*2 to G1 straight connector	2	
	SSL100-600900-000	板式阀组	Plate valve manifold	1	
	SSL100-302000-000	滑移柱塞泵	Slide piston pump	1	
	SSL100-410201-000	主右侧板	Main right side plate	1	
	SSL100-410101-000	主左侧板	Main left side plate	1	





第六章 电气系统

Chapter 6 Electric System

F 电气系统Electric System	6-1
-----------------------	-----

