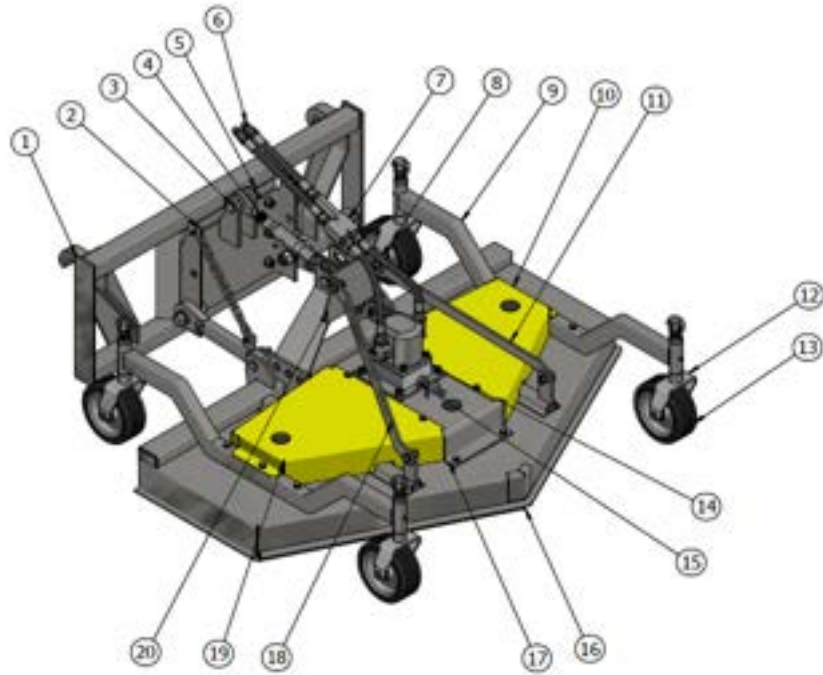
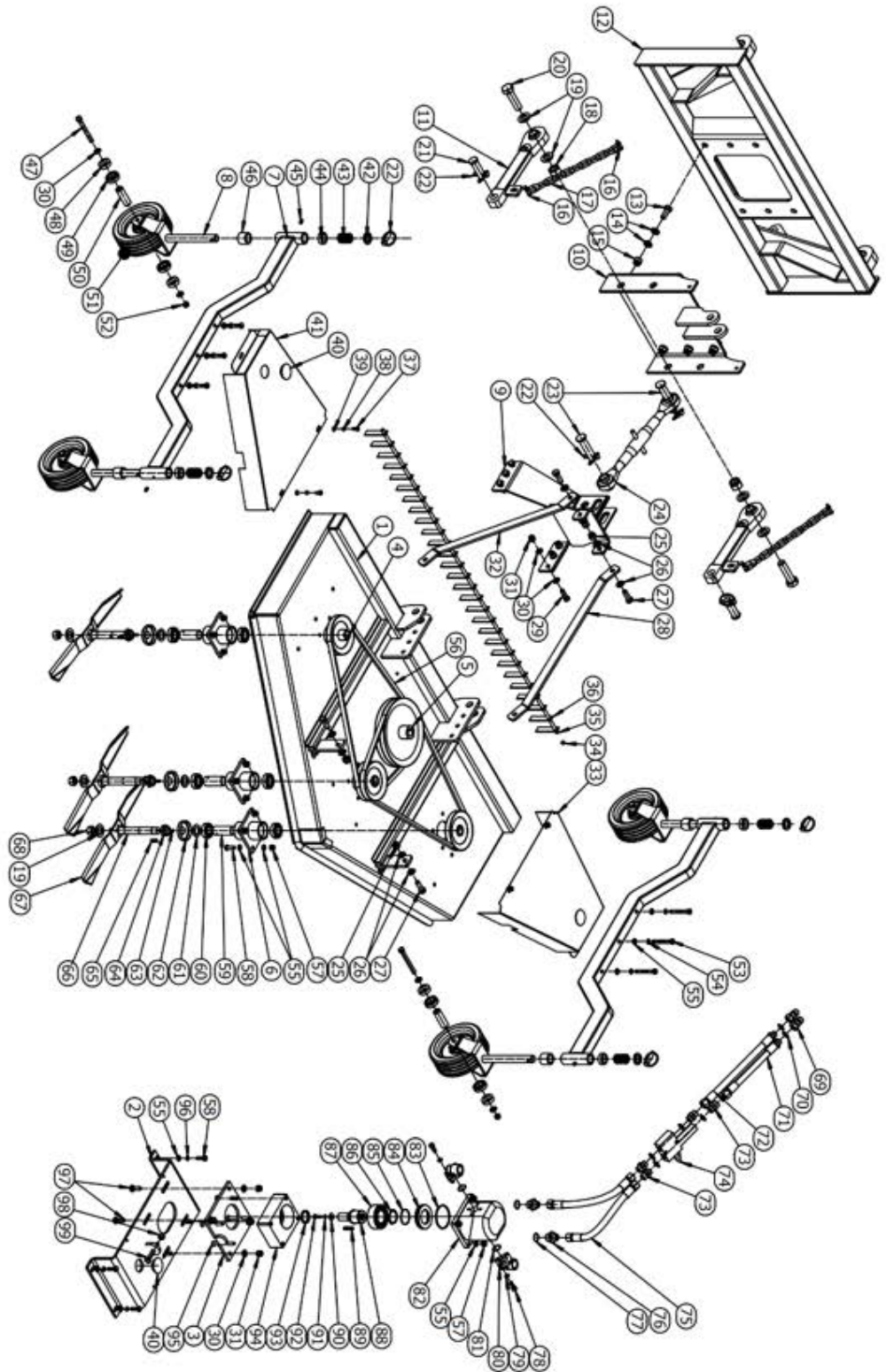


Finishing Mower Assembly SSFM



No.	Description	No.	Description
1.	Hitch hook	11.	Rear linkage (left)
2.	Adjustable chain	12.	Wheel assembly fork
3.	Pin	13.	Wheel
4.	Upper linkage	14.	Motor
5.	Hitch	15.	Motor adjustable bolt
6.	Oil connector	16.	Deck
7.	Valve	17.	Deck door
8.	Wheel assembly	18.	Rear linkage (right)
9.	Wheel bracket	19.	Belt cover(right)
10.	Belt cover (left)	20.	Linkage

Wheel loader finish mower



Part list

No.	Part Code.	Description.	Qty.	Note.
1	SS-FN150-010	mower deck	1	
2	SS-FN150-011	driven box bracket weldment	1	
3	SS-FN150-012	pump bracket weldment	1	
4	FM180.014	small pulley 1	1	
4	FM180.013	small pulley 2	2	
5	SS-FN150-013	big pulley	1	
6	FM180.012	blade axle	3	
7	SS-FN150-014	wheel assembly bracket	2	
8	FM180.026	wheel assembly fork	4	
9	SS-FN150-015	linkage	1	
10	SS-FN150-016	hitch front part	1	
11	HDL150-016	lower linkage	2	
12	SS-FN150-017	hich	1	
13	GB/T 5781 M16 x 40	hexagon bolt	6	
14	GB/T 97.1 16	flat washer	12	
15	GB/T 889.1 M16	nut	6	
16		D-pinφ8	4	
17		chain	2	
18	GB/T 889.1 M24	nut	2	
19	GB/T 97.1 24	flat washer	4	
20	GB/T 5782 M24 x 90	hexagon bolt	2	
21	SS-FN150-104	lower linkage pin	2	
22	O	round pin Ø10	4	
23	SS-FN150-105	pin	2	
24		upper linkage M27	1	
25	GB/T 889.1 M14	nut	4	
26	GB/T 97.1 14	flat washer	8	
27	GB/T 5783 M14 x 40	hexagon bolt	4	
28	SS-FN150-103	rear linkage	1	
29	GB/T 5781 M12 x 40	hexagon bolt	6	
30	GB/T 97.1 12	flat washer	12	
31	GB/T 889.1 M12	nut	6	
32	SS-FN150-107	rear linkage	1	
33	SS-FN150-101	belt cover (left)	1	
34	GB/T 78 M12 x 10	bolt	1	
35	SS-FN150-108	pin	1	
36	SS-FN150-102	teeth	N	
37	GB/T 5783 M8 x 16	hexagon bolt	4	
38	GB 93-87 8	spring washer	4	
39	GB/T 97.1 8	flat washer	4	
40	FM180.111	rubber cover	3	
41	SS-FN150-109	belt cover (right)	1	
42	FM180-105-1	adjustable washer H6	4	
43		spring1	4	
44	FM180-105-2	adjustable washer H12	4	
45	DIN 71412 - AM8 x 1	grease nipple	4	
46	FM180-105-3	adjustable washer H32	4	
47	GB/T 5780 M12 x 110	hexagon bolt	4	
48	FM180.129	spacer bush	8	

49	GB/T 276-94	ebaring 6005-2LS	8	
50	FM180.128	wheel axle	4	
51	FM180.125	rubber wheel	4	
52	GB/T 6172.2-2000 M12	nut	4	
53	GB/T 5782 M10 x 80	hexagon bolt	6	
54	GB/T 9074.26-1988 10	spring washer	6	
55	GB/T 97.1 10	flat washer	30	
56	V BX17x1752.6	belt	2	
57	GB/T 889.1 M10	nut	12	
58	GB/T 5783 M10 x 30	hexagon bolt	12	
59	FM180.123	spacer bush	3	
60	GB/T 276-94	bearing 6205	6	
61	FM180.121	washer	3	
62	FM180.122	cover	3	
63	DIN 71412 - AM 6	nipple	3	
64	ISO 10511 - M24	nut	3	
65	GB/T 1564-2003 A 8 x 7 x 28	key	3	
66	FM180.120	blade axle	3	
67	FM150.101	blade	3	
68	GB/T 6184 M18	nut	3	
69	G1/2	quick connector	2	
70	DIN 7603 - G1/2 x 27 (It)	oil seal	6	
71	SS-FN150-111	oil pipe 1	1	
72	SS-FN150-112	oil pipe 2	1	
73	G1/2-M22	bolt	4	
74	G1-2	valve	1	
75	SS-FN150-113	oil pipe 3	2	
76	HDLM150-115	bolt G1/2-G3/4	2	
77	DIN 7603 - G3/4 x 30	oil seal	2	
78	GB/T 70.1 M10 x 25	bolt	6	
79	GB 859-87 10	spring washer	6	
80	G3-4	connector	2	
81	φ25 x 2.65-G-GB/T 3452.1-2005	O oil seal	2	
82	M1235335	Motor	1	
83	φ77.5 x 3.55 JB/T 1092-1991	O oil seal	1	
84	HDLM150-118	sheath	1	
85	φ50 x 2.65-G-GB/T 3452.1-2005	O oil seal	1	
86	GB 894.1-86 - 45	spring ring	1	
87	GB/T 296-94	bearing 3209	1	
88	HDLM150-117	motor connector	1	
89	GB/T 1564-2003 A 8 x 7 x 40	key	1	
90	GB/T 96.1 8	flat washer	1	
91	GB 859-87 8	spring washer	1	
92	GB/T 5781 M8 x 25	hexagon bolt	1	
93	35X45X6	oil seal	1	
94	HDLM150-116	motor seat	1	
95	GB/T 70.3-2000 M10 x 90	bolt	4	
96	GB 93-87 10	spring washer	4	
97	GB/T 801 M12 x 35	bolt	4	
98	GB/T 6170 M12	nut	1	
99	GB/T 5783 M12 x 80	bolt	1	